

Wellis®

Wellness & Garden

CATALOG

2024



 **Life**



Content



Hot Tub

24-45



Stream Life swim spas

46-51



Sauna

54-67



Pergola

68-73



Garden Furniture

74-105



Grill

106-113





About us...

Since the company was founded in 2003, more and more people are choosing Wellis products around the world. The increasing demand for a healthy lifestyle increases the demand for quality wellness products as well. Thanks to our dedication to continuous development and growth, Wellis has now become the largest hot tub manufacturer on the European market and already has a significant share in the American market.

We produce hot tubs, swim spas, their associated thermal covers, and spa side cover panels at a plant with a total area of 30,000 m². The construction and continuous expansion of this huge plant, which is equipped with modern production tools, was motivated by the growing market demand, and our commitment to quality in manufacturing technology. Our products are stored in several warehouses. We currently sell 30.000 Wellis hot tubs per year at more than 1000 points of sale worldwide.

We have been developing our new product line for more than 3 years. Countless licences, thousands of work hours, and a multitude of our own innovations, that we are already extremely proud of, will be represented in our new models. Faithful to our company, we want to introduce excellent, user- and environmentally friendly products to the market, as it is increasingly important to us to pay special attention to the needs of our customers, and the same time protect the environment. The primary goal of our company is to provide exceptional wellness experience for our customers using as little energy as possible. There will be significant changes in the technological structure of our hot tubs while they will also get a renewed design.



"I was an active teenager; I travelled the world and was continuously on the hunt for new business opportunities. I worked on importing jeans from Asia and I always wanted to learn and expand. The real success in business found my brother and me in producing spas and together we created Wellis, Europe's leading hot tub company. In the beginning,

we imported spas and hydromassage tubs as ready-made, pre-assembled products. The year 2010 was to be a gigantic milestone in Wellis's and our lives, which is when we started manufacturing spas. We started building the factory in the spring of 2008, and a few months later the global financial crisis broke out, then the great economic recession started. Everyone tried to talk me out of starting to manufacture hydro-massage hot tubs in the middle of the crisis, since they absolutely count as a luxury item. The company's management didn't endorse starting

manufacturing, either, but I decided to go for it. To put it delicately, neither starting to make the products, nor introducing our own hot tubs to the European market was easy. Fortunately, we could say the rest is history, since our efforts were crowned by such success that manufacturing products ended up pulling the company out of the crisis. As our next great leap, I would name breaking into America, the native land of hot tubs, where in the last 2-3 years we have been growing our roots and introduced the brand named Wellis. Parallel to expanding our business in the USA, we would like to grow on. It is a glorious thing to be on the cutting edge, but it's an even greater responsibility!"

Zsolt Czafik CEO and Akos Czafik CEO
of Wellis Hungary.

Green energy

– SUSTAINABLE
PRODUCTION TECHNOLOGY



Instead of a long-term vision, focusing on sustainability has become the part of everyday life at Wellis. In the past few years, our company has placed increasing emphasis on the elements of our environmental-friendly and sustainable model.

Our efforts are based on two essential pillars: the first one is to optimize our production processes, and the second is to educate our customers about energy and water-saving aspects while considering the environmental factors.

Here are some processes which were introduced into the daily life of our company

- Reusing unnecessary materials with a special shredder.
- Production of abs (acrylonitrile-butadiene-styrene) from recycled plastic.
- Using low consumption pumps in hot tubs.
- Various developments in the name of renewable energy, such as integrating solar systems into our products.
- Reducing transport routes around the world and coordinating production and sales activities.
- Developing New, energy-efficient hot tubs



SAVE THE RAIN FOREST

In the process of our manufacturing technology, we pay special attention to environmental awareness, so we completely eliminated the use of wood during the production and replaced it with recycled materials.

This is how we protect our rainforests and nature. In order to achieve the most effective recycling, Wellis is not afraid of technological innovations either.



Quality assurance

Our quality is continuously benchmarked against the highest German production Standards under the TÜV certification protocol that we subscribe to. This ensures we constantly meet and exceed all relevant International quality standards.

We are proud of this commitment to excellence and the clear differentiation from our market competitors that it affords us. Our TÜV certificate guarantees that our products are of excellent quality, and are regularly and independently monitored to meet and exceed the highest manufacturing standards. The CE label on all our products reassures our customers that the design and build meet or exceed all relevant EU standards.

3

years guarantee
for the plumbing

10

years guarantee
for the shell



The result of 3 years of development

The Wellis R&D team has been working for 3 years on the new product portfolio, which will be revolutionary throughout the world.

61 patents are already registered in Europe; 14 in the US. Also there is a world patent for the electric water diverter. Technology breakthroughs result in energy-efficient and environment-friendly solutions.



Environmental awareness and energy efficiency

Energy-efficient solutions while also preferencing sustainability and environmentally conscious production technologies.

With this in mind, it was obvious that our new and renewed products would also be produced in accordance with these standards.

This is the reason our revised logo was named Life, which name will be carried on by both our product families: Peak and CityLife.



ENERGY EFFICIENCY



WATER TREATMENT



DESIGN, APPEARANCE

Focus on saving energy

**Wellis
Everest Life
premium plus**

Life
with SMART-In Step system

2.90 kWh / day
370 EUR / year*

**Bullfrog
A7LC**

Full foam (CEC)

3.96 kWh / day
505 EUR / year*

**Hot Spring
Envoy**

Full foam (CEC)

4.45 kWh / day
568 EUR / year*

**Jacuzzi
J-475**

(CEC)

5.47 kWh / day
698 EUR / year*

**Chinese
spa**

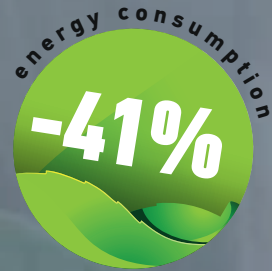
(CEC)

10.00 kWh / day
1 277 EUR / year*

* Sources: CEC - California Energy Commission; TÜV - Based on Wellis measurements with Smart-In Step System, California Energy Commission environment: water 39 °C, air 17 °C, filtering 1x2 hour.
1kw = 0.35 cents average calculated: https://ec.europa.eu/eurostat/statistics-explained/index.php/Electricity_price_statistics



New water diverter: Wow system



New Life Line Video



Our improved electric water diverter replaces the large manual diverter. Our device fills the same function and comes with a smaller panel with buttons for easy use.

The electric water diverter makes for a gentler massage experience due to the fact that after activating it, the speed of the water increases gradually. Thanks to the automation, we've built a new massage experience into the tub: the gradual changing of the direction of the massage every five seconds creates a pulsing effect, providing an even more authentic feeling of a traditional massage.

Concerning the water current, we combined the massage strength of two older-model massage pumps in only one by straightening the pipes and installing the

new water diverter. This way, the consumption of energy while in use has been reduced to half the previous amount.

Wellis made an energy efficient water diverter, which patent is registered in 152 countries.

Compared to our competitor's solution, it has 23% higher pressure with approx. 30% less energy consumption. Moreover, we compared it to our previous models, and the results were 75% higher pressure with approx. 41% less energy consumption.

Wellis EVEREST with old water diverter

To reach 12 PSI massage feeling needed:

2×3HP + 2×2HP pumps and 7400 W

Wellis EVEREST life with new diverter

To reach 12 PSI massage feeling needed:

2×3HP pumps and 4400 W



Smartphone application

Control your spa from home or while you are on the road with the Wellis Smartphone™ app!

Available for both iPhone and Android smartphones. Set the desired temperature and other functions from your phone, before you head over to the holiday house, so that by the time you arrive you will have a heated, ready-to-use spa waiting for you, providing you with all the benefits and positive effects of a Wellis hydromassage.

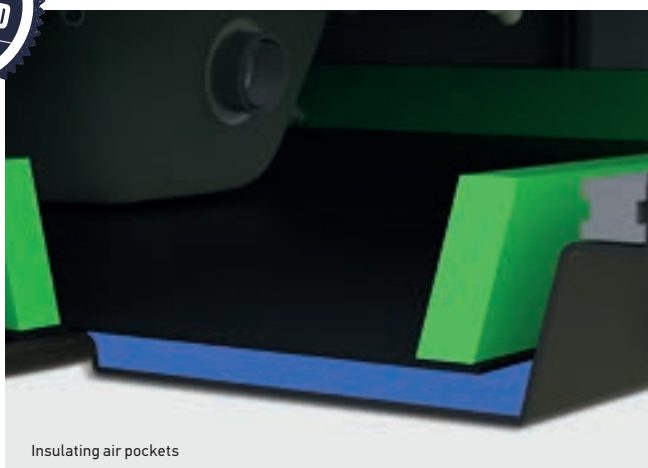
New Life scandinavian insulation



All our spas have received a new type of Life Scandinavian insulation. These insulation boards have been inserted into the spa's support frame, rather than being attached to the exterior cladding. The insulation is dimensionally accurate for the frame's inner measurements and can be easily installed or uninstalled.

The foam insulation under the rim has also been exchanged for an aesthetically more pleasing Life insulation.

In the tray, instead of the previous POLYFOAM insulation, we implemented the best insulator we could find: Air. We achieved this by installing an ABS sheet near the bottom plate, creating insulating air pockets.

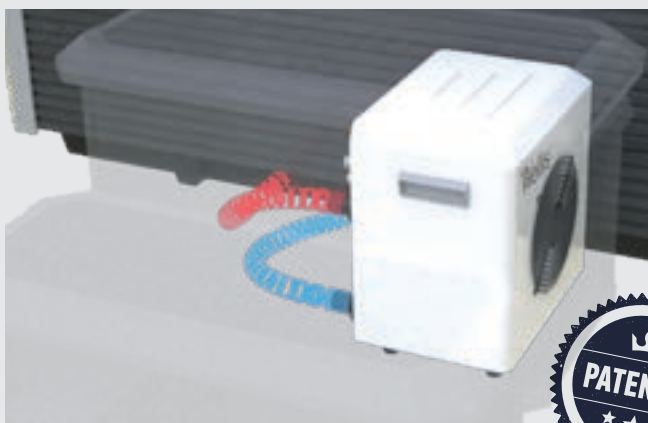


Insulating air pockets

SMART-In Step system

The heat pump can be stowed under the larger step. The heating of the water can be maintained more cost efficiently, without affecting the product's aesthetics.

The Smart-In Step system, equipped with a built-in heat pump, is capable of heating or cooling the water between -5°C and $+40^{\circ}\text{C}$, allowing for savings of 70-75% of the spa's heating energy. Inside the stairs, we have designed storage compartments where bathers can store towels or water treatment products. Additionally, our Peaklife models are equipped with a USB socket for mobile phone charging.



Water Purity

All Wellis spas use a multi-stage filtration and sanitation system that ensures crystal clear, safe bathing water with the minimum of user input.

The process starts with our special antimicrobial cartridge filters. The low energy eco-circulation pump draws spa water through these filters where any tiny particles are trapped. The antimicrobial coating then helps to destroy any bacteria that may be attached to the filtered particles, preventing growth and smells and ensuring the filters are easily cleaned and returned to service many times over.

Once the spa water has been filtered it passes through the heater and then the eco-circulation pump. Next it is passed through sanitation device that we fit.

Although a spas bathing water can be kept safe by chemicals alone, an electronic sanitation device will greatly reduce the amount of these chemicals that are required, and hence improve the quality of the water for bathers. Every spa we make is fitted with this device: OZMIX™ system.

Our filters ensure the purification of the water several times a day, leaving no dirt on the floor.

Our antimicrobial spa filter cartridges are designed to provide an unsurpassed level of leisure water cleansing.

CRYSTAL CLEAN SYSTEM

Thanks to the pipe with a diameter of 48 millimeters, the motor circulates more water and does so faster, thus filtering the water more speedily. The new circulation jet has been designed to have 3 zones, where 2 zones are pointed downwards to stir up the sand and dirt from the bottom of the hot tub.

The zone in the upper area then directs the water into the filter.



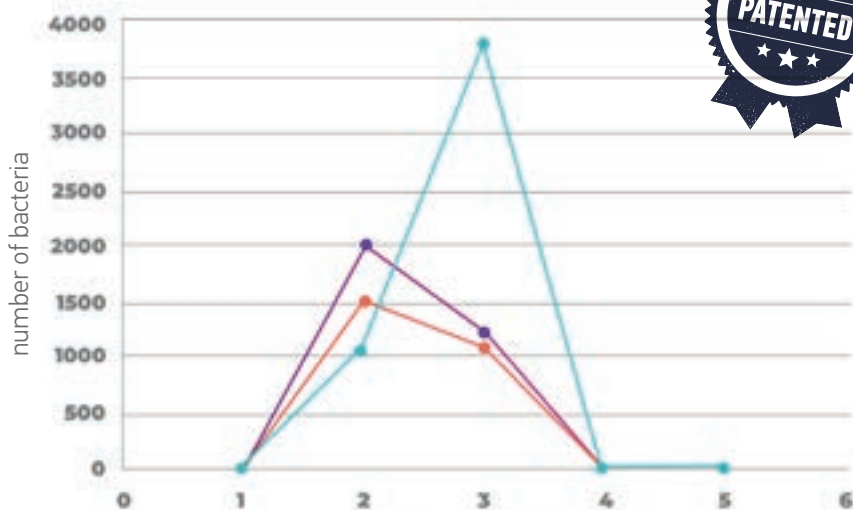
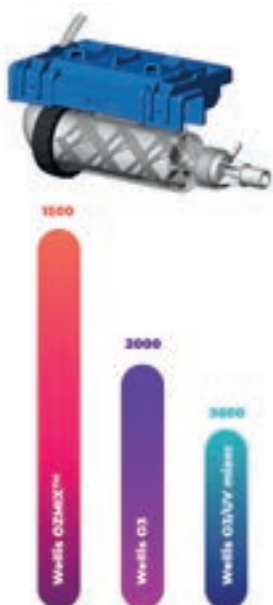
OZMIX™ SYSTEM

During Wellis developments, in the disinfection phase the tests showed that the ozone systems we are using are the most efficient for disinfection. The efficiency of the disinfecting effect can be increased by the mixing of ozone in the water.

To facilitate this, we have created the OZMIX™ system, that proved to be more effective than comparable disinfection systems by adding chlorine and the right amount of ph.

Our goal is to find the best possible disinfection mode and reduce the amount of chemicals which are currently in use.

We tested the OZMIX™ system on all the bacterial strains in our hot tubs and, as in the cases above, it performed better than the other disinfection systems. For all bacteria in our hot tubs, the previously used O_3 + UV showed more than 4,000 units of bacterium colonies, while after using the ozone mixer, less than half of the O_3 +UV test results, only a total of 1,500 units of bacterial colonies were indicated.



water sample taken from a massage pool



IN-LINE WIS

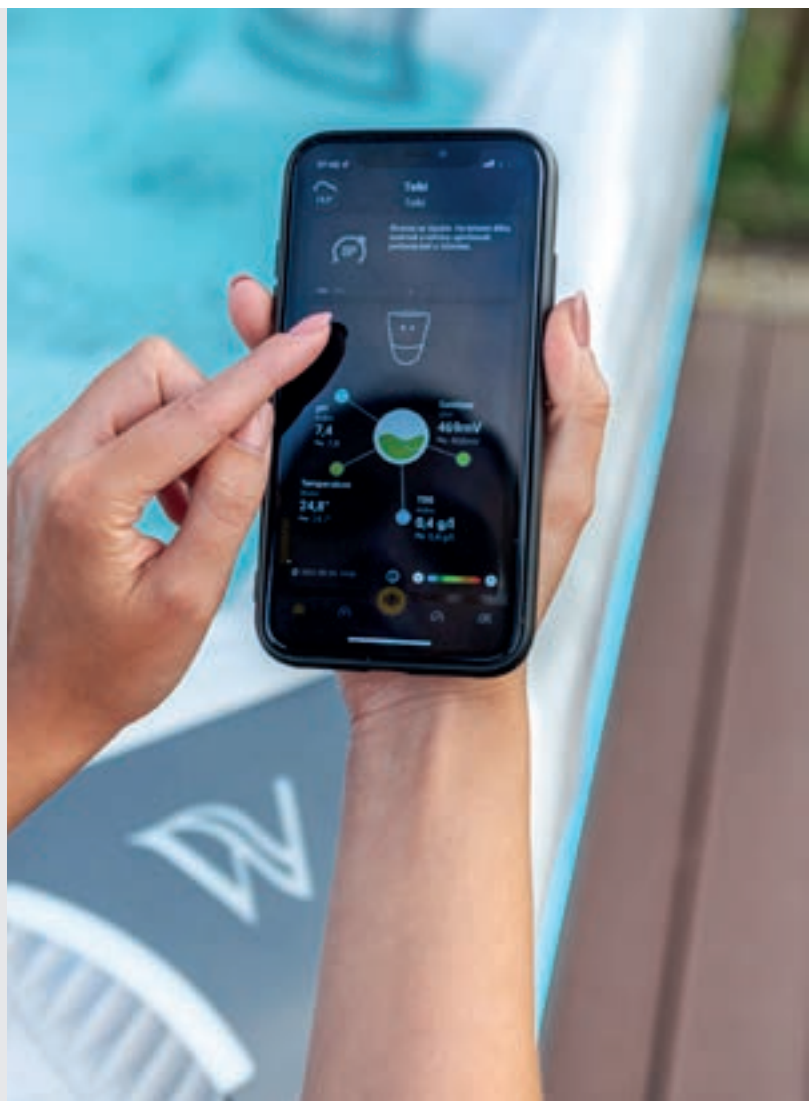
- This useful, built-in accessory provides 24-hour monitoring of your spa's water quality status via your smartphone.
- The machinery also provides the exact and required amount of chemicals.
- Since this is a built-in system, it does not disturb us during rest, it is a completely new system, developed by Wellis
- You can download the WIS application from Google Play or App Store.



App Store



Google Play





Sound system

AQUASOUL™ PRO 4.1 AND 2.1 SOUND SYSTEM (PEAKLIFE)

Experience the cutting-edge Wellis AquaSoul™ Pro sound system, featuring state-of-the-art, waterproof components designed for seamless integration with today's technology. Forget about outdated mp3 players and wired connections – the built-in Bluetooth receiver allows for wireless streaming directly from your mobile device. Choose from the powerful 4.1 system, which includes a 288 W subwoofer and four concealed 30 W speakers, or the compact 2.1 system with two integrated 30 W speakers, ensuring pristine audio quality for any setting.

MYMUSIC™ 2.0 (WITH 2 SPEAKERS) (CITYLIFE)

Immerse yourself in the myMusic™ 2.0 sound system, crafted with the latest waterproof technology to deliver superior sound quality. With no need for external devices, connect effortlessly to the built-in Bluetooth receiver from your mobile phone. This system simplifies your audio experience while maintaining high fidelity sound, making it perfect for any modern lifestyle.



PeakLife Hidden



PeakLife Rim



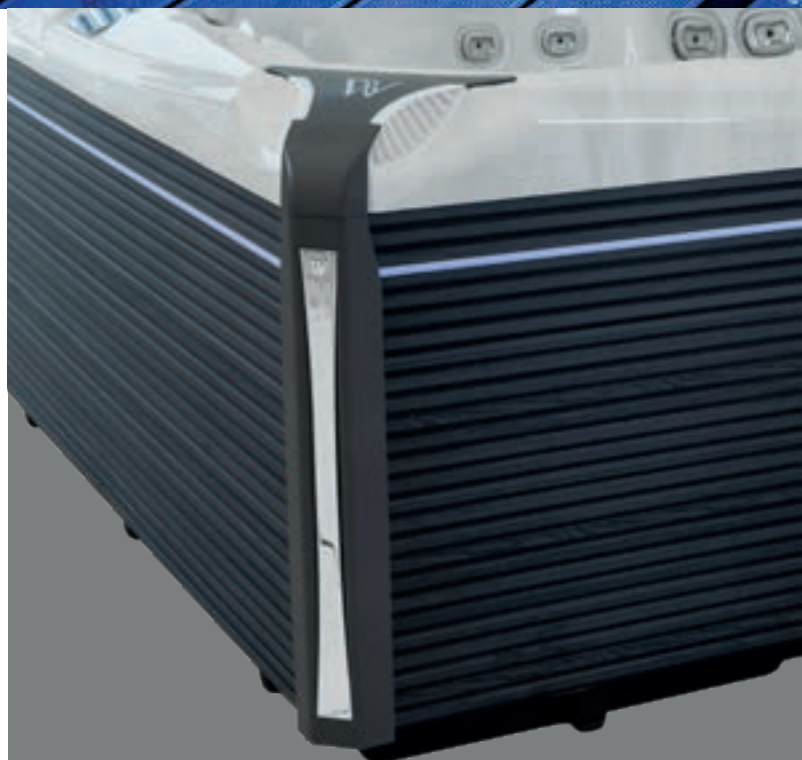
CityLife Rim



Future of design

LIGHTSIDE™ SPA CABINET

Wood-like, wide horizontal side and corner bars. These elements add an intimate atmosphere to the appearance of the spas. The cabinets are available in grey and brown colour. Besides this, our new spa side cabinet's futuristic look instantly flies us into the future. An LED strip runs along the side of the spa cover (PeakLife). The newly developed corner elements give a more modern and futuristic look to our new range of hot tubs.





Lightened, soft pillow



PeakLife filter housing

NECK MASSAGE & HEADREST

Takes your daily stress off your shoulder and neck. Advanced ergonomics, more comfortable design. The design of the headrest follows the line of the neck and head so you can relax more comfortably in our hot tubs.

WATERFALL

Sit under the cascading water and enjoy a soothing neck and shoulder massage. This accessory is a new development of Wellis, there is no other product on the market that is similar to it.

FILTER HOUSING

Our custom-made filter housing has an outstanding design, which complements the shades of the spa acrylic. Filters can be replaced easily with one move, anyone can do it easily. We made a unique, lighting design, which makes the hot tub more modern.

∞ WE DESIGNED THE 7" ROTATING INFINITY JET

The infinity jet makes the massage experience even more enjoyable by massaging a larger portion of the body and doesn't only move up and down, it draws an infinite figure eight as it turns.



Infinity Jet



Waterfall



Exclusive Lights colour therapy

In our spas we call this mood lighting. Our chromotherapy system is based on lights of three different colours: green, blue and red. These can be set to fade gently through the spectrum or, by a simple touch of the spa's control panel can be fixed on the single colour most beneficial to your mood.

EXCLUSIVE LIGHTS COLOUR THERAPY MOOD LIGHTING

When connected to Wellis control panels, including the SmartTouch systems, the Exclusive Lights system can be easily controlled. While the SmartTouch interface allows for personalized settings with an infinite range of colors and dimming intensity, other control panels offer the capability to step through colors, though with a more limited selection. The Exclusive Lights system can enhance the spa experience by illuminating three lighting zones: central lighting, rim lighting, and cabinet and corner lighting.



RIM LIGHTING

Rim lighting is a design element located under the decorative elements, the cup holders, the taps, and the filter housing. The jet lighting can be controlled simultaneously.

LIGHTING JETS

Wellis has developed numerous patents for its new models, one of which includes the innovative Lighting Jets. This special feature is available exclusively in the Premium Edition and Premium Plus Edition packages. The jets illuminate not only themselves but also the surface around them, enhancing the spa's interior with a modern and futuristic appearance, akin to sitting in a spaceship. This unique design not only modernizes the look of the spa but also increases the lighting surface, making it unlike anything else on the hot tub market.

LIGHTSIDE™ CABINET SYSTEM (PEAKLIFE)

The LightSide™ cabinet system appears in Wellis' new spas, which includes hidden lighting under the corner elements, and an in-house developed LED strip, which runs along the side cabinet of the hot tub. The integrated LED strip provides a special ambiance for evening bathing.



CENTRAL LIGHTING

All of the hot tubs have a central, underwater lighting, which lights the water of the entire spa.



Massage of wellis

RELAX MASSAGE SEAT

It targets the regeneration of the shoulder girdle and the longitudinal trunk muscle tissues, as well as the hip flexor muscles and the knee extensor muscles – the muscle groups most exposed to everyday loads.

EXPERT MASSAGE SEAT

Its adjustable jets can have physiological effects with customized directions and strength.

COOL DOWN MASSAGE SEAT

The armchair design provides relaxation after training; its psychological and calming effect should be mentioned in addition to the recovery of physiological functions.

FOCUS MASSAGE SEAT

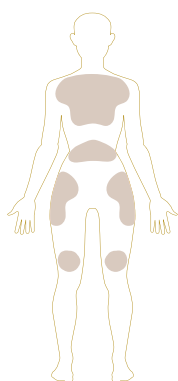
It offers its user an experience similar to the Expert effect, relaxing the longitudinal trunk muscle tissues, and passively exercising the hip and the thigh flexor and extensor muscle groups.

BODY FLOW MASSAGE SEAT

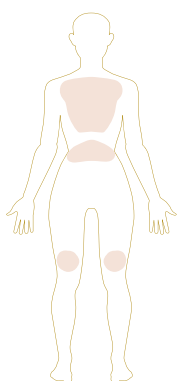
The massage seat with the most intensive physiological effect; in addition to the trunk's muscle fibers, it also has effects on venous and lymphatic circulation in the lower limbs, in this way bringing relief to vein valves.

INTENSO MASSAGE SEAT

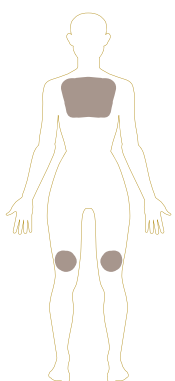
The most refreshing massage seat. The favorite of professional athletes. After exhaustive and intensive training, it ensures the regeneration of the most critical areas, the back and leg muscles Relax.



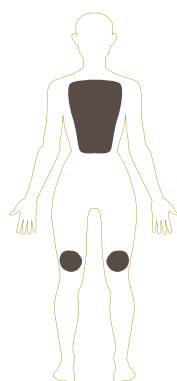
Relax massage



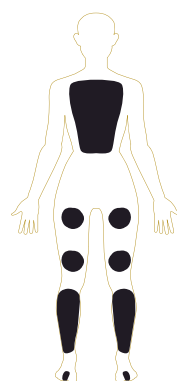
Expert massage



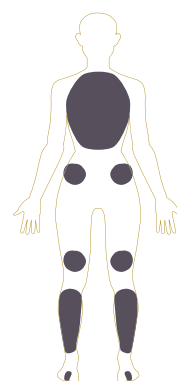
Cool down massage



Focus massage



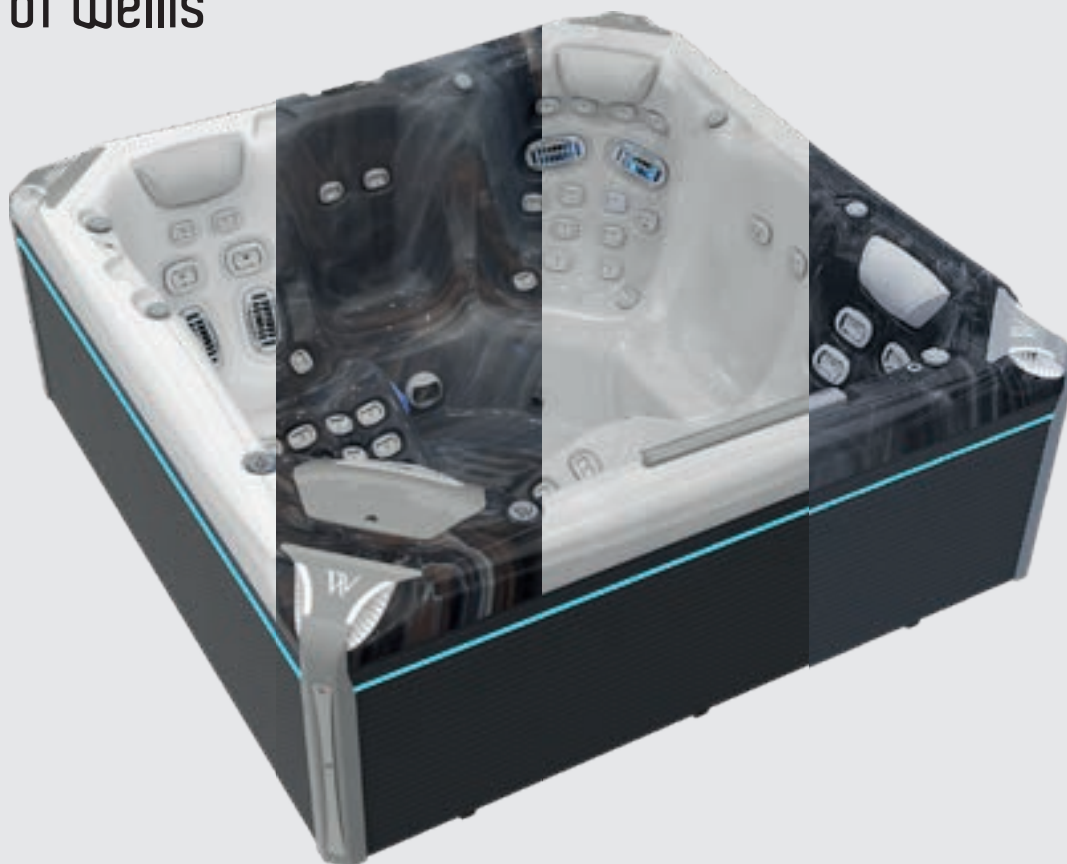
Body flow massage



Intenso massage

* The layout of the jets may vary for each tub in the different seat designs.

Colours of Wellis



ACRYLIC COLOURS

We have a comprehensive range of 4 beautiful contemporary shades of acrylic for our spas that will harmonise with any setting – indoor or out: Ice white, Midnight canyon, Sterling silver and Storm Clouds.



Ice white



Midnight canyon



Sterling silver



Storm Clouds



NEW ACRYLIC COLOUR!

MOONLIT IVORY

Discover the elegance of Moonlit ivory, exclusively available for our Everest and Kilimanjaro spa families in the Premium and Premium Plus packages. This unique matte finish not only enhances your space

with its sophisticated aesthetic but also signifies luxury and exclusivity. Thank you for choosing a lifestyle of unparalleled comfort and style.



brown



grey

CABINET COLOURS

No more sanding, oiling, and messy maintenance of a traditional timber cabinet. Our spa cabinets are made of a UV-resistant polymer material that looks as good as real wood but is entirely maintenance-free.

PeakLife spas have the new LightSide™-design cabinet is paired with vertical corner elements, giving elegance to the models. Available in grey and brown colors.



CityLife – Horizont Side Cabinet



PeakLife – LightSide™ Schrank

Control panels

SMARTTOUCH CONTROL PANEL (PEAKLIFE)

Full-featured keypad with color capacitive touchscreen display. Parting ways with physical buttons, keys, and overlays, our touchscreen keypad is fun to use, simple to learn and features an intuitive and engaging one-level menu interface.

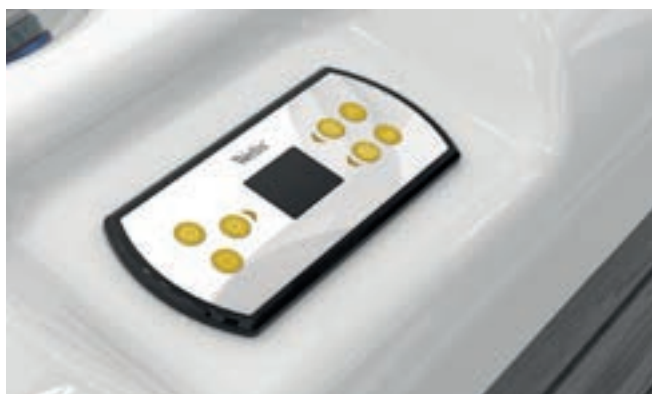




SMARTTOUCH CONTROL PANEL

EASY7 CONTROL PANEL (CITYLIFE)

The Wellis Easy7 brings all the features you really need to one keypad. Compact, with a big LCD screen; bright enough to be seen throughout the day; simple enough to use in the middle of the night; affordable, yet solidly built.



EASY7 CONTROL PANEL

EASY4 CONTROL PANEL (CALLISTO P&P, CASTOR P&P)

A high quality control system, designed to perfectly control the bathing experience. The Wellis Easy4 brings all the features you really need to one keypad. Compact, with a big LCD screen; bright enough to be seen throughout the day; simple enough to use in the middle of the night; affordable, yet solidly built.



EASY4 CONTROL PANEL

Hot Tub

2024 - Life models





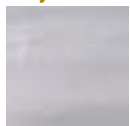


↑ Premium edition

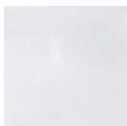
Everest

2 360 × 2 360 × 950 mm
2 reclining places, 3 sitting places

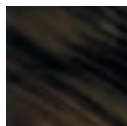
Acrylic colour



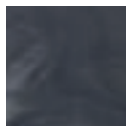
Sterling silver



Ice white



Midnight canyon



Storm clouds

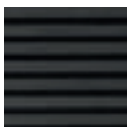


Moonlit ivory

Side cover colour



brown



grey

Premium Edition

WIS Inline system	built-in water analyzer
Exclusive Lights colour therapy	lighting jets

Premium Plus Edition

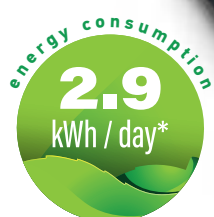
WIS Inline system	built-in water analyzer
Exclusive Lights colour therapy	lighting jets
3 kW heat pump	
Smart- In step prepared to heat pump location	

Deluxe Edition

Net weight / Water volume	452 kg / 1 382 l
Frame	WPS
Side cover	LightSide™ UV-proof wood textured
Reinforcement	Poli-MAX™
Insulation	Life scandinavian insulation
Total number of jets	68
∞ Infinity jets	6
Min.** / Opt. power requirement	1 × 25A - 230V / 50Hz / 3 × 16A - 400V / 50Hz
Pumps	2 × 3 HP single speed
Circulation pump	W-EC pump (0.25 kW)
WOW system	electronic water diverter
Heater	3 kW
Control panel	SmartTouch
Auxiliary control panel	2 × 1 buttons
Water sanitization	Ozmix™ system (Ozone + mixer)
Cartridge filter	3 × MicroPlus antibacterial
Flat fountain jets	2 × 1 lighting
Waterfall	1 lighting
Exclusive Lights colour therapy	Central lighting (only Deluxe edition), Rim lighting, Cabinet & corner lighting
Sound system	Aquasoul™ Pro 4.1 hidden
Remote spa control	SmartPhone app with wifi connection
Thermo cover	standard - 12 cm

* California Energy Commission data: water 39 °C, air 17 °C, filtering 1×2 hour.
Based on TÜV measurements with heat pump.

** If the minimum current is connected, the massage motor(s) and the heating unit cannot be operated at the same time.

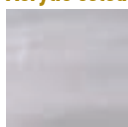


↑ Premium edition

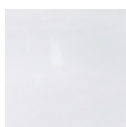
Kilimanjaro

2 360 × 2 360 × 950 mm
1 reclining place, 5 sitting places

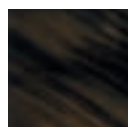
Acrylic colour



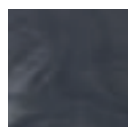
Sterling silver



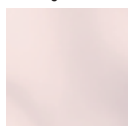
Ice white



Midnight canyon



Storm clouds

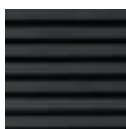


Moonlit ivory

Side cover colour



brown



grey

Premium Edition

WIS Inline system	built-in water analyzer
Exclusive Lights colour therapy	lighting jets

Premium Plus Edition

WIS Inline system	built-in water analyzer
Exclusive Lights colour therapy	lighting jets
3 kW heat pump	
Smart- In step prepared to heat pump location	

Deluxe Edition

Net weight / Water volume	454 kg / 1 450 l
Frame	WPS
Side cover	LightSide™ UV-proof wood textured
Reinforcement	Poli-MAX™
Insulation	Life scandinavian insulation
Total number of jets	59
∞ Infinity jets	6
Min.** / Opt. power requirement	1 × 25A - 230V / 50Hz / 3 × 16A - 400V / 50Hz
Pumps	2 × 3 HP single speed
Circulation pump	W-EC pump (0.25 kW)
WOW system	electronic water diverter
Heater	3 kW
Control panel	SmartTouch
Auxiliary control panel	1 buttons
Water sanitization	Ozmix™ system (Ozone + mixer)
Cartridge filter	3 × MicroPlus antibacterial
Flat fountain jets	2 × 1 lighting
Waterfall	1 lighting
Exclusive Lights colour therapy	Central lighting (only Deluxe edition), Rim lighting, Cabinet & corner lighting
Sound system	Aquasoul™ Pro 4.1 hidden
Remote spa control	SmartPhone app with wifi connection
Thermo cover	standard - 12 cm

* California Energy Commission data: water 39 °C, air 17 °C, filtering 1x2 hour.
Based on TÜV measurements with heat pump.

** If the minimum current is connected, the massage motor(s) and the heating unit cannot be operated at the same time.

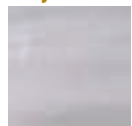


↑ Premium edition

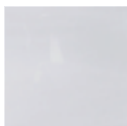
Elbrus **Life**

2 360 × 2 360 × 950 mm
7 sitting places

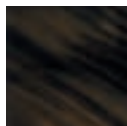
Acrylic colour



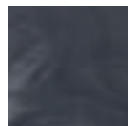
Sterling silver



Ice white



Midnight canyon

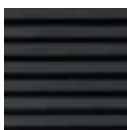


Storm clouds

Side cover colour



brown



grey

Deluxe Edition

Net weight / Water volume	452 kg / 1 500 l
Frame	WPS
Side cover	LightSide™ UV-proof wood textured
Reinforcement	Poli-MAX™
Insulation	Life scandinavian insulation
Total number of jets	61
∞ Infinity jets	4
Min.** / Opt. power requirement	1 × 25A - 230V / 50Hz / 3 × 16A - 400V / 50Hz
Pumps	2 × 3 HP single speed
Circulation pump	W-EC pump (0.25 kW)
WOW system	electronic water diverter
Heater	3 kW
Control panel	SmartTouch
Auxiliary control panel	2 × 1 buttons
Water sanitization	Ozmix™ system (Ozone + mixer)
Cartridge filter	3 × MicroPlus antibacterial
Flat fountain jets	2 × 1 lighting
Inlet	1 small, lighting
Exclusive Lights colour therapy	Central lighting (only Deluxe edition), Rim lighting, Cabinet & corner lighting
Sound system	Aquasoul™ Pro 4.1 hidden
Remote spa control	SmartPhone app with wifi connection
Thermo cover	standard - 12 cm

* California Energy Commission data: water 39 °C, air 17 °C, filtering 1×2 hour.
Based on TÜV measurements with heat pump.

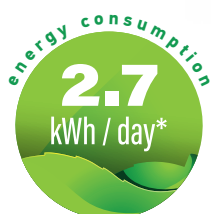
** If the minimum current is connected, the massage motor(s) and the heating unit cannot be operated at the same time.

Premium Edition

WIS Inline system	built-in water analyzer
Exclusive Lights colour therapy	lighting jets

Premium Plus Edition

WIS Inline system	built-in water analyzer
Exclusive Lights colour therapy	lighting jets
3 kW heat pump	
Smart- In step prepared to heat pump location	

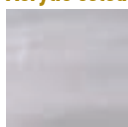


↑ Premium edition

Teide **Life**

1 600 × 2 150 × 865 mm
1 reclining place, 2 sitting places

Acrylic colour

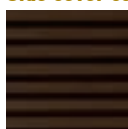


Sterling silver

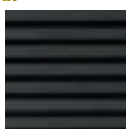


Ice white

Side cover colour



brown



grey

Premium Edition

WIS Inline system	built-in water analyzer
Exclusive Lights colour therapy	lighting jets

Premium Plus Edition

WIS Inline system	built-in water analyzer
Exclusive Lights colour therapy	lighting jets
3 kW heat pump	
Smart- In step prepared to heat pump location	

Deluxe Edition

Net weight / Water volume	311 kg / 750 l
Frame	WPS
Side cover	LightSide™ UV-proof wood textured
Reinforcement	Poli-MAX™
Insulation	Life scandinavian insulation
Total number of jets	32
∞ Infinity jets	2
Min.** / Opt. power requirement	1 × 16A - 230V / 50Hz / 1 × 25A - 230V / 50Hz
Pumps	1 × 3 HP single speed
Circulation pump	W-EC pump (0.25 kW)
Heater	3 kW
Control panel	SmartTouch
Auxiliary control panel	–
Water sanitization	Ozmix™ system (Ozone + mixer)
Cartridge filter	2 × MicroPlus antibacterial
Flat fountain jets	2 × 1 lighting
Waterfall	–
Exclusive Lights colour therapy	Central lighting (only Deluxe edition), Rim lighting, Cabinet & corner lighting
Sound system	Aquasoul™ 2.1
Remote spa control	SmartPhone app with wifi connection
Thermo cover	standard - 12 cm

* California Energy Commission data: water 39 °C, air 17 °C, filtering 1x2 hour.
Based on TUV measurements with heat pump.

** If the minimum current is connected, the massage motor(s) and the heating unit cannot be operated at the same time.

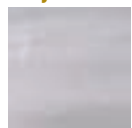


↑ Premium edition

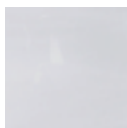
Atlas **Life**

2 150 × 2 150 × 865 mm
1 reclining place, 5 sitting places

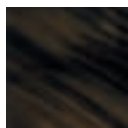
Acrylic colour



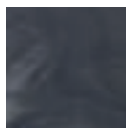
Sterling silver



Ice white



Midnight canyon

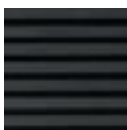


Storm clouds

Side cover colour



brown



grey

Deluxe Edition

Net weight / Water volume	391 kg / 1 100 l
Frame	WPS
Side cover	LightSide™ UV-proof wood textured
Reinforcement	Poli-MAX™
Insulation	Life scandinavian insulation
Total number of jets	43
∞ Infinity jets	4
Min.** / Opt. power requirement	1 × 16A - 230V / 50Hz / 1 × 25A - 230V / 50Hz
Pumps	2 × 2 HP single speed
Circulation pump	W-EC pump (0.25 kW)
WOW system	electronic water diverter
Heater	3 kW
Control panel	SmartTouch
Auxiliary control panel	–
Water sanitization	Ozmix™ system (Ozone + mixer)
Cartridge filter	2 × MicroPlus antibacterial
Flat fountain jets	–
Waterfall	1 lighting
Exclusive Lights colour therapy	Central lighting (only Deluxe edition), Rim lighting, Cabinet & corner lighting
Sound system	Aquasoul™ 2.1
Remote spa control	SmartPhone app with wifi connection
Thermo cover	standard - 12 cm

* California Energy Commission data: water 39 °C, air 17 °C, filtering 1×2 hour.
Based on TÜV measurements with heat pump.

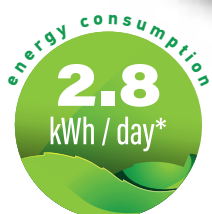
** If the minimum current is connected, the massage motor(s) and the heating unit cannot be operated at the same time.

Premium Edition

WIS Inline system	built-in water analyzer
Exclusive Lights colour therapy	lighting jets

Premium Plus Edition

WIS Inline system	built-in water analyzer
Exclusive Lights colour therapy	lighting jets
3 kW heat pump	
Smart- In step prepared to heat pump location	



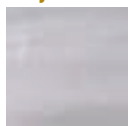
↑ Premium edition

Makalu Life

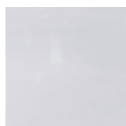
2 150 × 2 150 × 865 mm

2 reclining places, 3 sitting places

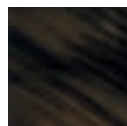
Acrylic colour



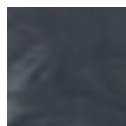
Sterling silver



Ice white



Midnight canyon

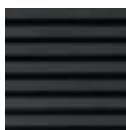


Storm clouds

Side cover colour



brown



grey

Premium Edition

WIS Inline system	built-in water analyzer
Exclusive Lights colour therapy	lighting jets

Premium Plus Edition

WIS Inline system	built-in water analyzer
Exclusive Lights colour therapy	lighting jets
3 kW heat pump	
Smart- In step prepared to heat pump location	

Deluxe Edition

Net weight / Water volume	380 kg / 1 070 l
Frame	WPS
Side cover	LightSide™ UV-proof wood textured
Reinforcement	Poli-MAX™
Insulation	Life scandinavian insulation
Total number of jets	51
∞ Infinity jets	4
Min.** / Opt. power requirement	1 × 16A - 230V / 50Hz / 1 × 25A - 230V / 50Hz
Pumps	2 × 2 HP single speed
Circulation pump	W-EC pump (0.25 kW)
WOW system	electronic water diverter
Heater	3 kW
Control panel	SmartTouch
Auxiliary control panel	–
Water sanitization	Ozmix™ system (Ozone + mixer)
Cartridge filter	2 × MicroPlus antibacterial
Flat fountain jets	–
Waterfall	1 lighting
Exclusive Lights colour therapy	Central lighting (only Deluxe edition), Rim lighting, Cabinet & corner lighting
Sound system	Aquasoul™ 2.1
Remote spa control	SmartPhone app with wifi connection
Thermo cover	standard - 12 cm

* California Energy Commission data: water 39 °C, air 17 °C, filtering 1×2 hour.
Based on TÜV measurements with heat pump.

** If the minimum current is connected, the massage motor(s) and the heating unit cannot be operated at the same time.

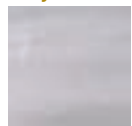


↑ Premium edition

Mandala **Life**

2 150 × 2 150 × 865 mm
7 sitting places

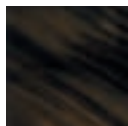
Acrylic colour



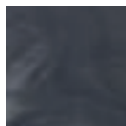
Sterling silver



Ice white



Midnight canyon

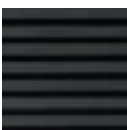


Storm clouds

Side cover colour



brown



grey

Deluxe Edition

Net weight / Water volume	388 kg / 1 125 l
Frame	WPS
Side cover	LightSide™ UV-proof wood textured
Reinforcement	Poli-MAX™
Insulation	Life scandinavian insulation
Total number of jets	46
∞ Infinity jets	2
Min.** / Opt. power requirement	1 × 16A - 230V / 50Hz / 1 × 25A - 230V / 50Hz
Pumps	2 × 2 HP single speed
Circulation pump	W-EC pump (0.25 kW)
WOW system	electronic water diverter
Heater	3 kW
Control panel	SmartTouch
Auxiliary control panel	–
Water sanitization	Ozmix™ system (Ozone + mixer)
Cartridge filter	2 × MicroPlus antibacterial
Flat fountain jets	–
Inlet	2 small, lighting
Exclusive Lights colour therapy	Central lighting (only Deluxe edition), Rim lighting, Cabinet & corner lighting
Sound system	Aquasoul™ 2.1
Remote spa control	SmartPhone app with wifi connection
Thermo cover	standard - 12 cm

* California Energy Commission data: water 39 °C, air 17 °C, filtering 1×2 hour.
Based on TÜV measurements with heat pump.

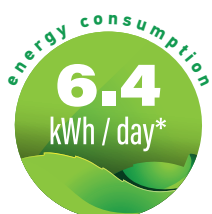
** If the minimum current is connected, the massage motor(s) and the heating unit cannot be operated at the same time.

Premium Edition

WIS Inline system	built-in water analyzer
Exclusive Lights colour therapy	lighting jets

Premium Plus Edition

WIS Inline system	built-in water analyzer
Exclusive Lights colour therapy	lighting jets
3 kW heat pump	
Smart- In step prepared to heat pump location	

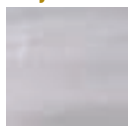


Olympus

3 540 × 2 300 × 980 mm

2 reclining places, 7 sitting places

Acrylic colour



Sterling silver

Side cover colour



brown



grey

Options

3 kW heat pump

Smart- In step prepared to heat pump location

Net weight / Water volume	900 kg / 2 331 l
Frame	Stainless steel
Side cover	HorizontSide™ UV-proof wood textured
Reinforcement	Fiberglass reinforced
Insulation	Life scandinavian insulation
Total number of jets	88
Min.** / Opt. power requirement	1 × 16A - 230V / 50Hz / 3 × 16A - 400V / 50Hz
Pumps	1 × 3 HP double speed 2 × 2 HP single speed 1 × 3 HP single speed
Circulation pump	1 × 1.25 HP (1,1 kW)
Heater	3 kW
Control panel	SmartTouch
Auxiliary control panel	1 × 1 button + 1 × 4 buttons
Water sanitization	Ozmix™ System
Cartridge filter	1 × Superfine
Laminar fountain jets	2 × 1 lighting
Waterfall	1 × lighting
Led lights	20 × exclusive LEDs + lighting jets
Sound system	Aquasoul™ Pro 4.1 Pop-Up
Aromatic therapy	Liquid Aroma (without fragrance)
SmartPhone app - wifi connection	standard
Scandinavian Insulation	standard
Heat exchanger preparation	standard

* California Energy Commission data: water 39 °C, air 17 °C, filtering 1×2 hour.
Based on TÜV measurements with heat pump.

** If the minimum current is connected, the massage motor(s) and the heating unit cannot be operated at the same time.

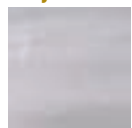


Palermo

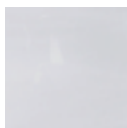
2 180 × 2 180 × 900 mm

2 reclining places, 3 sitting places

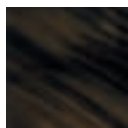
Acrylic colour



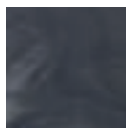
Sterling silver



Ice white



Midnight canyon



Storm clouds

Side cover colour



brown



grey

Deluxe Edition

Net weight / Water volume	335 kg / 1 175 l
Frame	WPS
Side cover	HorizontSide™ UV-proof with W-Side corner
Reinforcement	Poli-MAX™
Insulation	Life scandinavian insulation
Total number of jets	42
Min.** / Opt. power requirement	1 × 25A - 230V / 50Hz / 3 × 16A - 400V / 50Hz
Pumps	2 × 3 HP - single speed
Circulation pump	W-EC pump (0.25 kW)
WOW system	–
Heater	3 kW
Control panel	Easy7
Auxiliary control panel	–
Water sanitization	Ozmix™ system (Ozone + mixer)
Cartridge filter	1 × Superfine
Flat fountain jets	2 × 1 lighting
Inlet	1 small, lighting
Exclusive Lights colour therapy	Exclusive spot and Rim lighting
Sound system	MyMusic™ 2.0
Remote spa control	SmartPhone app with wifi connection
Thermo cover	standard - 12 cm

* California Energy Commission data: water 39 °C, air 17 °C, filtering 1x2 hour.
Based on TÜV measurements with heat pump.

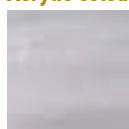
** If the minimum current is connected, the massage motor(s) and the heating unit cannot be operated at the same time.



Malaga **Life**

2 180 × 2 180 × 900 mm
1 reclining place, 5 sitting places

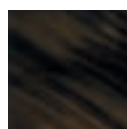
Acrylic colour



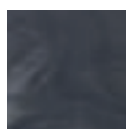
Sterling silver



Ice white



Midnight canyon

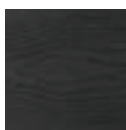


Storm clouds

Side cover colour



brown



grey

Premium Edition

3 kW heat pump

Smart- In step prepared to heat pump location

Deluxe Edition

Net weight / Water volume	335 kg / 1 200 l
Frame	WPS
Side cover	HorizontSide™ UV-proof with W-Side corner
Reinforcement	Poli-MAX™
Insulation	Life scandinavian insulation
Total number of jets	40
Min.** / Opt. power requirement	1 × 25A - 230V / 50Hz / 3 × 16A - 400V / 50Hz
Pumps	2 × 3 HP - single speed
Circulation pump	W-EC pump (0.25 kW)
WOW system	–
Heater	3 kW
Control panel	Easy7
Auxiliary control panel	–
Water sanitization	Ozmix™ system (Ozone + mixer)
Cartridge filter	1 × Superfine
Flat fountain jets	3 × 1 lighting
Inlet	1 small, lighting
Exclusive Lights colour therapy	Exclusive spot and Rim lighting
Sound system	MyMusic™ 2.0
Remote spa control	SmartPhone app with wifi connection
Thermo cover	standard - 12 cm

* California Energy Commission data: water 39 °C, air 17 °C, filtering 1x2 hour.
Based on TÜV measurements with heat pump.

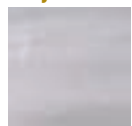
** If the minimum current is connected, the massage motor(s) and the heating unit cannot be operated at the same time.



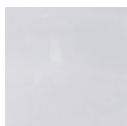
Lima Life

2180 × 2180 × 900 mm
7 sitting places

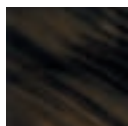
Acrylic colour



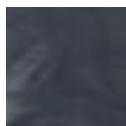
Sterling silver



Ice white



Midnight canyon



Storm clouds

Side cover colour



brown



grey

Deluxe Edition

Net weight / Water volume	346 kg / 1 300 l
Frame	WPS
Side cover	HorizontSide™ UV-proof with W-Side corner
Reinforcement	Poli-MAX™
Insulation	Life scandinavian insulation
Total number of jets	44
Min.** / Opt. power requirement	1 × 25A - 230V / 50Hz / 3 × 16A - 400V / 50Hz
Pumps	2 × 3 HP - single speed
Circulation pump	W-EC Pump (0.25 kW)
WOW system	–
Heater	3 kW
Control panel	Easy7
Auxiliary control panel	–
Water sanitization	Ozmix™ system (Ozone + mixer)
Cartridge filter	1 × Superfine
Flat fountain jets	2 × 1 lighting
Inlet	1 small, lighting
Exclusive Lights colour therapy	Exclusive spot and Rim lighting
Sound system	MyMusic™ 2.0
Remote spa control	SmartPhone app with wifi connection
Thermo cover	standard - 12 cm

* California Energy Commission data: water 39 °C, air 17 °C, filtering 1×2 hour.
Based on TÜV measurements with heat pump.

** If the minimum current is connected, the massage motor(s) and the heating unit cannot be operated at the same time.

Premium Edition

3 kW heat pump

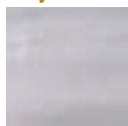
Smart- In step prepared to heat pump location



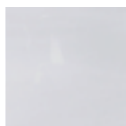
Manhattan

2 010 × 1 530 × 850 mm
1 reclining place, 2 sitting places

Acrylic colour



Sterling silver



Ice white

Side cover colour



brown



grey

Premium Edition

3 kW heat pump

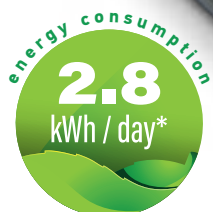
Smart- In step prepared to heat pump location

Deluxe Edition

Net weight / Water volume	242 kg / 710 l
Frame	WPS
Side cover	HorizontSide™ UV-proof with W-Side corner
Reinforcement	Poli-MAX™
Insulation	Life scandinavian insulation
Total number of jets	30
Min.** / Opt. power requirement	1 × 16A - 230V / 50Hz / 1 × 25A - 230V / 50Hz
Pumps	1 × 3 HP - single speed
Circulation pump	W-EC pump (0.25 kW)
WOW system	–
Heater	3 kW
Control panel	Easy7
Auxiliary control panel	–
Water sanitization	Ozmix™ system (Ozone + mixer)
Cartridge filter	1 × Superfine
Flat fountain jets	2 × 1 lighting
Waterfall	–
Exclusive Lights colour therapy	Exclusive spot and Rim lighting
Sound system	MyMusic™ 2.0
Remote spa control	SmartPhone app with wifi connection
Thermo cover	standard - 12 cm

* California Energy Commission data: water 39 °C, air 17 °C, filtering 1x2 hour.
Based on TÜV measurements with heat pump.

** If the minimum current is connected, the massage motor(s) and the heating unit cannot be operated at the same time.

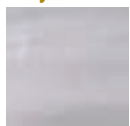


Budapest Life

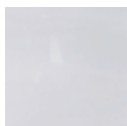
2 000 × 2 000 × 890 mm

2 reclining places, 3 sitting places

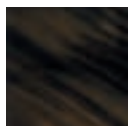
Acrylic colour



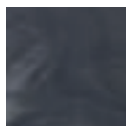
Sterling silver



Ice white



Midnight canyon



Storm clouds

Side cover colour



brown



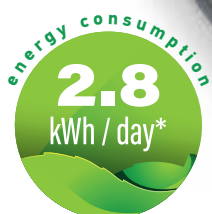
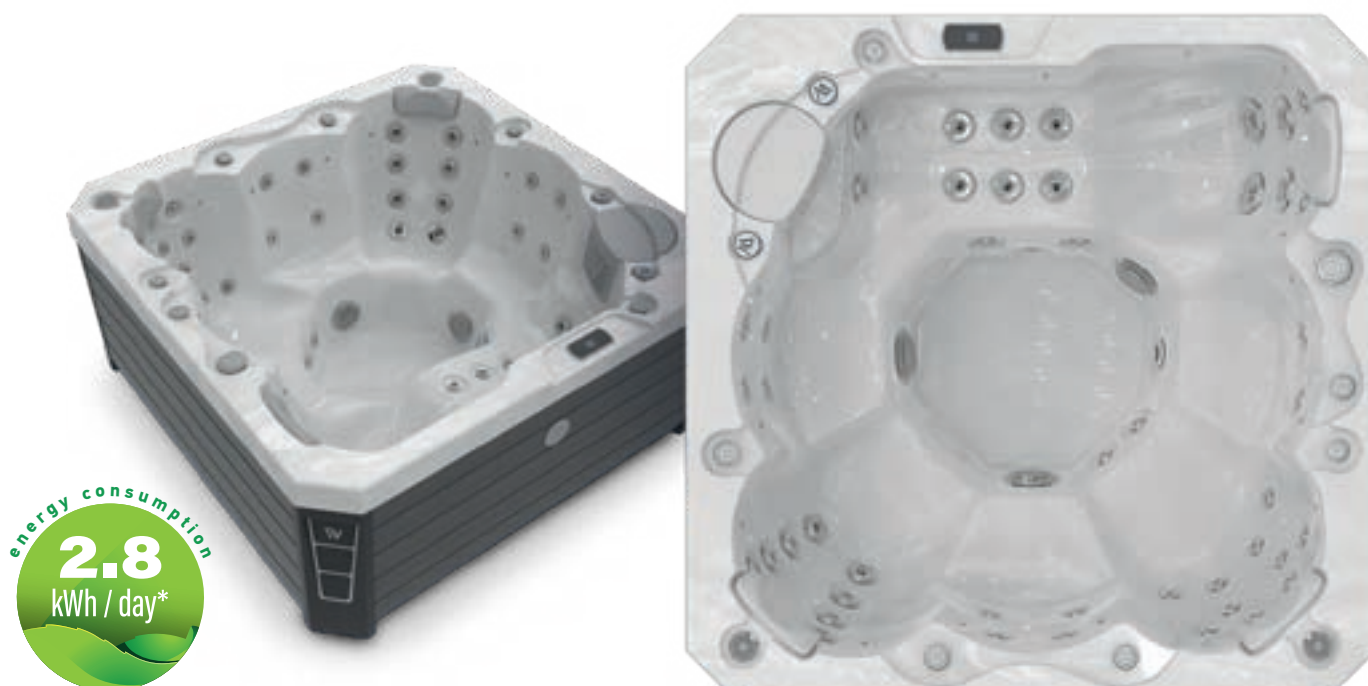
grey

Deluxe Edition

Net weight / Water volume	299 kg / 1 200 l
Frame	WPS
Side cover	HorizontSide™ UV-proof with W-Side corner
Reinforcement	Poli-MAX™
Insulation	Life scandinavian insulation
Total number of jets	42
Min.** / Opt. power requirement	1 × 16A - 230V / 50Hz / 1 × 25A - 230V / 50Hz
Pumps	1 × 3 HP - single speed
Circulation pump	W-EC pump (0.25 kW)
WOW system	–
Heater	3 kW
Control panel	Easy7
Auxiliary control panel	–
Water sanitization	Ozmix™ system (Ozone + mixer)
Cartridge filter	1 × Superfine
Flat fountain jets	–
Waterfall	–
Exclusive Lights colour therapy	Exclusive spot and Rim lighting
Sound system	MyMusic™ 2.0
Remote spa control	SmartPhone app with wifi connection
Thermo cover	standard - 12 cm

* California Energy Commission data: water 39 °C, air 17 °C, filtering 1×2 hour.
Based on TÜV measurements with heat pump.

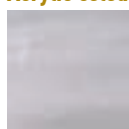
** If the minimum current is connected, the massage motor(s) and the heating unit cannot be operated at the same time.



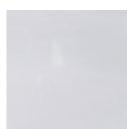
Prague **Life**

2 000 × 2 000 × 900 mm
1 reclining place, 5 sitting places

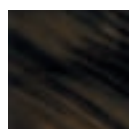
Acrylic colour



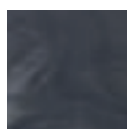
Sterling silver



Ice white



Midnight canyon



Storm clouds

Side cover colour



brown



grey

Premium Edition

3 kW heat pump

Smart- In step prepared to heat pump location

Deluxe Edition

Net weight / Water volume	280 kg / 1 200 l
Frame	WPS
Side cover	HorizontSide™ UV-proof with W-Side corner
Reinforcement	Poli-MAX™
Insulation	Life scandinavian insulation
Total number of jets	50
Min.** / Opt. power requirement	1 × 16A - 230V / 50Hz / 1 × 25A - 230V / 50Hz
Pumps	1 × 3 HP - single speed
Circulation pump	W-EC pump (0.25 kW)
WOW system	–
Heater	3 kW
Control panel	Easy7
Auxiliary control panel	–
Water sanitization	Ozmix™ system (Ozone + mixer)
Cartridge filter	1 × Superfine
Flat fountain jets	2 × 1 lighting
Waterfall	–
Exclusive Lights colour therapy	Exclusive spot and Rim lighting
Sound system	MyMusic™ 2.0
Remote spa control	SmartPhone app with wifi connection
Thermo cover	standard - 12 cm

* California Energy Commission data: water 39 °C, air 17 °C, filtering 1x2 hour.
Based on TÜV measurements with heat pump.

** If the minimum current is connected, the massage motor(s) and the heating unit cannot be operated at the same time.



Firenze **Life**

2130 × 1600 × 750 mm
2 reclining places, 1 sitting place

Acrylic colour



Sterling silver

Ice white

Side cover colour



brown

grey

Premium Edition

3 kW heat pump

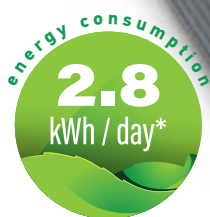
Smart- In step prepared to heat pump location

Deluxe Edition

Net weight / Water volume	227 kg / 750 l
Frame	WPS
Side cover	HorizontSide™ UV-proof with W-Side corner
Reinforcement	Poli-MAX™
Insulation	Life scandinavian insulation
Total number of jets	37
Min.** / Opt. power requirement	1 × 16A - 230V / 50Hz / 1 × 25A - 230V / 50Hz
Pumps	1 × 2 HP - single speed
Circulation pump	W-EC pump (0.25 kW)
WOW system	–
Heater	3 kW
Control panel	Easy4
Auxiliary control panel	–
Water sanitization	Ozmix™ system (Ozone + mixer)
Cartridge filter	1 × MicroPlus antibacterial
Flat fountain jets	–
Waterfall	–
Exclusive Lights colour therapy	Exclusive spot and Rim lighting
Sound system	MyMusic™ 2.0
Remote spa control	SmartPhone app with wifi connection
Thermo cover	standard - 12 cm

* California Energy Commission data: water 39 °C, air 17 °C, filtering 1×2 hour.
Based on TÜV measurements with heat pump.

** If the minimum current is connected, the massage motor(s) and the heating unit cannot be operated at the same time.

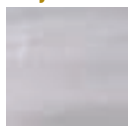


Lugano **Life**

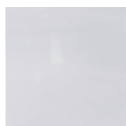
2300 × 2300 × 900 mm

1 reclining places, 5 sitting places

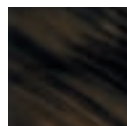
Acrylic colour



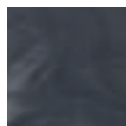
Sterling silver



Ice white



Midnight canyon



Storm clouds

Side cover colour



brown



grey

Premium Edition

3 kW heat pump

Smart- In step prepared to heat pump location

Deluxe Edition

Net weight / Water volume	387 kg / 1 600 l
Frame	WPS
Side cover	HorizontSide™ UV-proof wood textured
Reinforcement	Poli-MAX™
Insulation	Life scandinavian insulation
Total number of jets	52
Min.** / Opt. power requirement	1 × 25A - 230V / 50Hz / 3 × 16A - 230V / 50Hz
Pumps	2 × 3 HP - single speed
Circulation pump	W-EC pump (0.25 kW)
WOW system	–
Heater	3 kW
Control panel	Easy7
Auxiliary control panel	–
Water sanitization	Ozmix™ system (Ozone + mixer)
Cartridge filter	3 × Superfine
Flat fountain jets	2 × 1 lighting
Waterfall	–
Exclusive Lights colour therapy	Exclusive spot and Rim lighting
Sound system	MyMusic™ 2.0
Remote spa control	SmartPhone app with wifi connection
Thermo cover	standard - 12 cm

* California Energy Commission data: water 39 °C, air 17 °C, filtering 1×2 hour.
Based on TÜV measurements with heat pump.

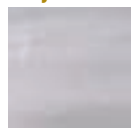
** If the minimum current is connected, the massage motor(s) and the heating unit cannot be operated at the same time.



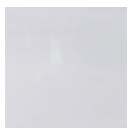
Vienna

2300 × 2300 × 900 mm
7 sitting places

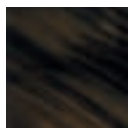
Acrylic colour



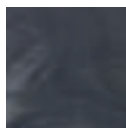
Sterling silver



Ice white



Midnight canyon



Storm clouds

Side cover colour



brown



grey

Deluxe Edition

Net weight / Water volume	226 kg / 1 300 l
Frame	WPS
Side cover	HorizontSide™ UV-proof wood textured
Reinforcement	Poli-MAX™
Insulation	Life scandinavian insulation
Total number of jets	62
Min.** / Opt. power requirement	1 × 25A - 230V / 50Hz / 3 × 16A - 230V / 50Hz
Pumps	2 × 3 HP - single speed
Circulation pump	W-EC pump (0.25 kW)
WOW system	–
Heater	3 kW
Control panel	Easy7
Auxiliary control panel	–
Water sanitization	Ozmix™ system (Ozone + mixer)
Cartridge filter	3 × Superfine
Flat fountain jets	2 × 1 lighting
Waterfall	–
Exclusive Lights colour therapy	Exclusive spot and Rim lighting
Sound system	MyMusic™ 2.0
Remote spa control	SmartPhone app with wifi connection
Thermo cover	standard - 12 cm

* California Energy Commission data: water 39 °C, air 17 °C, filtering 1×2 hour.
Based on TÜV measurements with heat pump.

** If the minimum current is connected, the massage motor(s) and the heating unit cannot be operated at the same time.

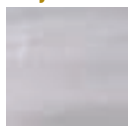


Callisto P&P

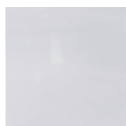
2 000 × 2 000 × 890 mm

2 reclining places, 3 sitting places

Acrylic colour



Sterling silver



Ice white

Side cover colour



grey

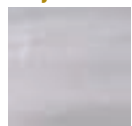
Net weight / Water volume	247 kg / 956 l
Frame	Impregnated wood
Side cover	HorizontSide™ UV-proof wood textured
Reinforcement	Poli-MAX™
Insulation	Polyfoam (1 cm)
Total number of jets	20
Power requirement EU	1 × 16A - 230V / 50Hz
Power requirement UK	1 × 13A - 230V / 50Hz
Pumps	1 × 2 LE - double speed
Circulation pump	–
WOW system	–
Heater	2 kW
Control panel	Easy4
Auxiliary control panel	–
Water sanitization	Ozmix™ system
Cartridge filter	1 × MicroPlus antibacterial
Flat fountain jets	–
Waterfall	–
Exclusive Lights colour therapy	Exclusive spot
Remote spa control	–
Remote spa control	–
Thermo cover	standard - 12 cm



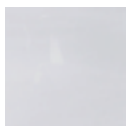
Castor P&P Life

2 000 × 2 000 × 900 mm
1 reclining places, 5 sitting places

Acrylic colour



Sterling silver



Ice white

Side cover colour



grey

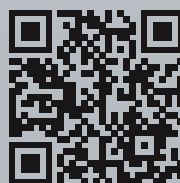
Net weight / Water volume	224 kg / 1 120 l
Frame	Impregnated wood
Side cover	HorizontSide™ UV-proof wood textured
Reinforcement	Poli-MAX™
Insulation	Polyfoam (1 cm)
Total number of jets	20
Power requirement EU	1 × 16A - 230V / 50Hz
Power requirement UK	1 × 13A - 230V / 50Hz
Pumps	1 × 2 LE - double speed
Circulation pump	–
WOW system	–
Heater	2 kW
Control panel	Easy4
Auxiliary control panel	–
Water sanitization	Ozmix™ system
Cartridge filter	1 × Superfine
Flat fountain jets	–
Waterfall	–
Exclusive Lights colour therapy	Exclusive spot
Remote spa control	–
Remote spa control	–
Thermo cover	standard - 12 cm



Explore...



... our factory headquarters in Özd through our video showcasing the hot tub manufacturing process there, accessible via the QR code below!



... the video of our factory center in Dabas, where our headquarter facility is located along with our SwimSpa manufacturing!

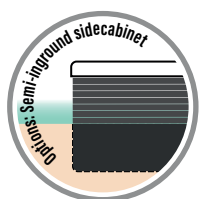
Stream Life swim spas







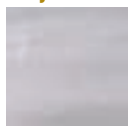
← Simple installation,
no need for concreting



Rio Grande **Life**

6 000 × 2 350 × 1 470 mm
1 reclining places, 4 sitting places

Acrylic colour



Sterling silver

Side cover colour



brown



grey

Options

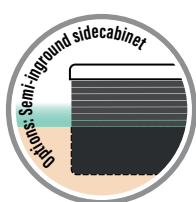
- 3 kW heat pump
- Smart- In step prepared to heat pump location

Net weight / Water volume	1 300 kg / 6 298 l
Frame	Stainless steel
Side cover	HorizontSide™ or semi-inground
Reinforcement	Fiberglass reinforced
Total number of jets	41
Opt. power requirement (hydro m.)	1 × 40A / 230V / 50Hz
Min. power requirement*	1 × 20A / 230V / 50Hz
Opt. power req.	W-flow: 3 × 16A / 400V / 50Hz, Turbine: 1 × 32A / 230V / 50Hz
Min. power req.* (swim spa)	W-flow: 1 × 35A / 230V / 50Hz, Turbine: 1 × 25A / 230V / 50Hz
Pumps (hydro massage)	2 × 3 HP, single speed + circ. pump (0.25 kW),
Pumps (swim spa)	3 × 3 HP, double speed / Turbine + circ. pump (1.1 kW)
Heater	2 × 3 kW
Control panel	2 × SmartTouch
Auxiliary control panel	–
Water sanitization	Ozmix™ System
Cartridge filter	1 + 2 Superfine
Laminar fountain jets	3 + 6 lighting
Inlet	1 × lighting
Led lights	2 × 16 exclusive LEDs + illuminated control valves
Sound system	AquaSoul™ Pro 4.1
Aromatic therapy	Liquid Aroma (without fragrance)
SmartPhone app - wifi connection	standard
Scandinavian insulation	standard
Heat exchanger preparation	standard
Swimming stick	standard

* If the minimum current is connected, the massage motor(s) and the heating unit cannot be operated at the same time.



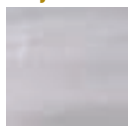
← Simple installation,
no need for concreting



Amazonas

5 500 × 2 350 × 1 470 mm
2 sitting places

Acrylic colour



Sterling silver

Side cover colour



brown



grey

Options

3 kW heat pump

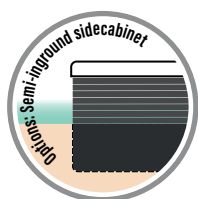
Smart- In step prepared to heat pump location

Net weight / Water volume	1 100 kg / 8 236 l
Frame	Stainless steel
Side cover	HorizontSide™ or semi-inground
Reinforcement	Fiberglass reinforced
Total number of jets	24
Opt. power requirement	W-flow: 3 × 20A / 400V / 50Hz, Turbine: 3 × 16A / 400V / 50Hz
Min. power requirement*	W-flow: 1 × 35A / 230V / 50Hz, Turbine: 1 × 20A / 230V / 50Hz
Pumps (hydro massage)	1 × 3 HP, single speed + circ. pump (1.1 kW)
Pumps (swim spa)	3 × 3 HP, double speed / Turbine
Heater	3 kW
Control panel	SmartTouch
Auxiliary control panel	–
Water sanitization	Ozmix™ System
Cartridge filter	4 × Superfine
Laminar fountain jets	2 × 3 lighting
Waterfall	–
Led lights	1 × 20 exclusive LEDs + illuminated control valves
Sound system	AquaSoul™ Pro 4.1
Aromatic therapy	–
SmartPhone app - wifi connection	standard
Scandinavian insulation	standard
Heat exchanger preparation	standard
Swimming stick	standard

* If the minimum current is connected, the massage motor(s) and the heating unit cannot be operated at the same time.



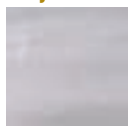
← Simple installation,
no need for concreting



Danube

4 500 × 2 350 × 1 470 mm
2 sitting places

Acrylic colour



Sterling silver

Side cover colour



brown



grey

Options

3 kW heat pump

Smart- In step prepared to heat pump location

Net weight / Water volume	1 047 kg / 6 113 l
Frame	Stainless steel
Side cover	HorizontSide™ or semi-inground
Reinforcement	Fiberglass reinforced
Total number of jets	24
Opt. power requirement	W-flow: 3 × 20A / 400V / 50Hz, Turbine: 3 × 16A / 400V / 50Hz
Min. power requirement*	W-flow: 3 × 16A / 400V / 50Hz, Turbine: 1 × 20A / 230V / 50Hz
Pumps (hydromassage)	1 × 3 HP, single speed + circ. pump
Pumps (swim spa)	3 × 3 HP, double speed / Turbine
Heater	3 kW
Control panel	SmartTouch
Auxiliary control panel	–
Water sanitization	Ozmix™ System
Cartridge filter	2 × Superfine
Laminar fountain jets	2 × 3 lighting
Waterfall	–
Led lights	18 × exclusive LEDs + illuminated control valves
Sound system	AquaSoul™ Pro 4.1
Aromatic therapy	–
SmartPhone app - wifi connection	standard
Scandinavian insulation	standard
Heat exchanger preparation	standard
Swimming stick	standard

* If the minimum current is connected, the massage motor(s) and the heating unit cannot be operated at the same time.





SpaGrip spa mounted

This powder-coated, rust-free handrail, partially covered with anti-slip foam, can be mounted on the side panel of any spa. It ensures a comfortable and safe way to get in and out of the spa.



SpaGrip floor standing

The floor-standing version of SpaGrip can be clamped under the spa and attached to the side cover. It guarantees a convenient and secure way of entering and exiting the spa, while can be replaced when not needed.



TowelBar

Crafted from sleek, black powder-coated aluminum, TowelBar holds your towels just a short distance away from splashing water. When not in use, it conveniently folds flat against your spa. With quick and easy installation, it is compatible with almost any spa model.



Spaziano tray

With its sturdy construction and 360° rotation, Spaziano tray offers a versatile and hassle-free way to store snacks, drinks, reading materials, and other essentials while enjoying your spa experience.



WelliStep

The hassle-free spa step that requires no maintenance, featuring a UV resistant plastic construction, a weight capacity of 120 kg, anti-slip rubber treads, and dimensions of 707×621×425 mm.



Swim spa stairs

Dimension with rail: 147×165×93.5 cm
Dimension without rail: 147×77×88 cm



Smart-In Step

Smart-In Step with heat pump storage compartment. In Peaklife spa models, additional functions are available, such as a USB socket and LED lighting that can be integrated into the Exclusive Lights colour therapy.



Heat pump

You can significantly reduce your spa's heating costs thanks to the latest coolant and high-quality compressor. The reinforced fan reduces the noise level and vibration of the device.



WIS - Wellis intelligent system

The WIS smart water analyser provides a thorough analysis of spa water, measuring quality, temperature, and conductivity. Compatible with all spa types, the mobilephone app enables real-time monitoring of water conditions for immediate updates.



Automatic water hardness or PH value meter

With this equipment, you can constantly check the water hardness and PH level of your spa-water and ensure the correct chemical composition.



Spa booster pillow

This comfortable pillow fits any spa; it can be fixed and adjusted to the water level. Sturdy, heat resistant material, easy to fill, standard pipe fitting, suction cup for non-slip feature.



Floating chemical dispenser

It ensures a steady flow of chemicals. The chemical in the dispenser does not come into contact with the hot tub shell, therefore there is no damage or discoloration. Multi-stage, adjustable chemical dispensing.



Filter cleaning device

The purpose of the Wellis filter cleaning device is to clean your spa filter in a flash.



Spa wand

With the hand-held Spa wand vacuum spa cleaner, you may collect impurities from the bottom of the spa, the steps or the surface of water – without having to drain the water. It is delivered with special heads.



Manual filter cartridge cleaner

The filters can be cleaned simply and quickly with the manual filter cartridge cleaner. Eight lamellas can be cleaned at the same time without splashing; it can be connected to the garden hose.



Spa-cleaning glove

This glove uses microfibre technology to lift dust and dirt from surfaces with a soft touch, preventing scratches and tarnishing.



Spa cover wipes

Spa cover cleaning wipes are designed to clean your spa or hot tub cover removing dirt and stains without the need of additional cleaning agents.



Spa cleaning disc

Eliminates water-surface oils & reduces scum line formation. Absorbs scum, oily residue including body oils, suntan lotion. Improves filter performance.



Easy cover lifter

With the use of the Easy cover lifter, one person can easily remove the thermo cover. It fits all spa sizes. Durable, powder-sprayed surface. Non-slip handle.



Universal cover lifter

Removing the cover is easier than ever with the universal cover lifter. In order to ensure proper operation, there must be a space of at least 60 cm between the side of the spa and the wall. Can be used with Xtreme™ thermo cover as well!



Wellis Crystal spa chemical package

Package content:
2 l Wellis Watertreatment; 18 x chlorine tablets; 1 dispenser (for chlorine tablets); 1 microfiber cloth.



Wellis Crystal swim spa chemical package

Package content:
26 x water soluble packs (100 g), 1 chlorine tablet holder, 30 x chlorine tablets 90%/20g, 1 microfiber cloth, instructions for use.



Wellis Crystal Spa Cleaner

Specially designed for the cleaning of spa water pipes. Removes lime scale deposits and impurities. It is used when the spa water is freshened or exchanged. As a manufacturer, we recommend spa water be changed quarterly.



Wellis Crystal Bright & Clear

Wellis Crystal Bright & Clear flocculant liquid neutralizes dirt, soap, oil in all spas. When added regularly, ensures crystal clear water.



Wellis Crystal Alkalinity balancer

Increases total alkalinity and prevents fluctuating pH values. Alkalinity is important to be able to check the pH value.



Wellis Crystal Foam Down

Antifoam product for hot water massage pools. Does not contain oily substances. Add undiluted directly to the foam.



Wellis Crystal Metal clear

A de-metallizer neutralizes iron, copper and other minerals in the water and prevents them from accumulating on the surface of the spa, causing damage.



Wellis Crystal pH Down

The pH value of the spa water is very important. If the pH value of the water is well adjusted, water disinfectants also work more effectively. Wellis Crystal pH Down pH reducer lowers the pH level in your spa.



Active charcoal filter for spas

When your spa is filled through an active charcoal pre-filter, you get crystal clear bathwater. Sufficient for pre-filtering 8,000 l water.



Water softener for spas

If your spa is filled with demineralized water using this resin-filled pre-filter, it will prevent lime-stone buildup on mechanical devices, thus increasing their service life.



Wellis Crystal filter cleaner

To keep the spa water crystal clear, the spa filter must be cleaned once a week usage, the Wellis Crystal filter cleaner. Depending on use, this process may need to be performed more frequently as well.



Bromine salt

Water sanitizer granules with sodium bromide content designed for spas equipped with the in.Clear (bromide generating) system. Each box contains 2.2 kg of product.



Wellis Crystal Pool check 5in1

A set of test strips used to measure total water hardness, total chlorine, free chlorine, total alkalinity, and pH levels in spas. Each box contains 50 test strips.



Antibacterial filter cartridges

Paper filters with an antibacterial coating, whose fibers with an increased surface area are capable of multiplying the performance of a traditional filter cartridges.



Aroma liquid for spas

Liquid aroma for spas 250 ml. eucalyptus, lavender, mediterranean, orange bloom, rosemary.



Rollcover

Explore our newest product addition, the swim spa roll covers that is crafted to enhance your spa experience on select models: Olympus, Danube, Amazonas, Rio Grande.

Key Features:

- Durable and lockable, designed to withstand any weather condition.
- UV protected for longevity and appearance maintenance.
- Easily roll off in under 60 seconds, simplifying your spa experience.
- Compatible with optional shelf brackets for added functionality.



Thermal cover

The purpose of using the thermo cover is to maintain the set temperature of the spa water. Thermal insulation is achieved through a special foam layer, which is covered with a UV-resistant artificial leather cover on the outside. The thermo cover is 12 cm thick in the middle and slopes towards the edges of the spa (7 cm), allowing rainwater to easily drain off.

Sauna





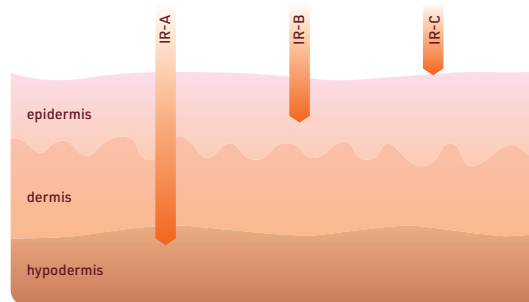
Wellis Infrared saunas

An infra cabin is efficient, yet gentler than traditional saunas, as the temperature inside is only 35–45 °C, thus it is suitable for people who don't prefer high temperatures. The heart of an infra cabin is an infrared heater that emits an invisible ray of certain defined wavelengths.

Long-wave infrared radiation penetrates into muscle fibers at a depth of 3.5 to 4 cm, resulting in 3–4 times stronger sweating than normal. Inside an infra sauna, sweating happens not only through the sweat glands, but also through the sebaceous glands, which is important because many toxic substances are not soluble in water but only in body fat. In a normal sauna, 97% of the sweat consists of water, while in the case of an infra sauna, 80% of sweat is water and 20% of it is fat, and it contains cholesterol and other fat-soluble substances as well. So during the use of an infra sauna, you not only lose weight but also get rid of harmful chemicals and toxins accumulated in your body.

FULL SPECTRUM SAUNA

By quickly warming up the fluorescent lamps, you can immediately enjoy the effect of the infrared sauna on physical and mental recharge from the moment you turn it on. IR rays of different wavelengths penetrate the skin to different depths, thus ensuring the detoxifying effect of both the upper and deeper layers of the skin. Enjoy the radiant benefits of your infrared sauna from the very first use!







Helios hemlock

INFRARED SAUNA

82.8 × 100.7 × 194 cm | Indoor Redlight™ infrared sauna for 1 person
 Canadian hemlock tree | 6-mm thick tinted safety glass door and sides
 chromotherapy LED illumination | Bluetooth receiver (for playing music)
 2 speakers | ventilation holes | energy requirement: 1,65 kW/230V
 4 pcs energy saving RedLight heaters (1 back - 350W, 2 front - 400W/pc, 1 calf level - 500W)



Bluetooth receiver unit with USB to ensure that you can listen to your favorite songs while you relax!





Solaris hemlock

INFRARED SAUNA

131.4 × 99.3 × 194 cm | Indoor Redlight™ infrared sauna for 2 people
 Canadian hemlock tree | 6-mm thick tinted safety glass door and sides
 chromotherapy LED illumination | Bluetooth receiver (for playing music)
 2 speakers | ventilation holes | energy requirement: 2 kW/230V
 5 pcs energy saving RedLight heaters (2 back - 350W/pc, 2 front - 400W/pc, 1 calf level - 500W)



Bluetooth receiver unit with USB
 to ensure that you can listen to your
 favorite songs while you relax!





Sundance hemlock

INFRARED SAUNA

159.4 × 99.3 × 194 cm | Indoor Redlight™ infrared sauna for 3 people

Canadian hemlock tree | 6-mm thick tinted safety glass door and sides

chromotherapy LED illumination | Bluetooth receiver (for playing music)

2 speakers | ventilation holes | energy requirement: 2,35 kW/230V

6 pcs energy saving RedLight heaters (3 back - 350W/pc, 2 front - 400W/pc, 1 calf level - 500W)



Bluetooth receiver unit with USB to ensure that you can listen to your favorite songs while you relax!





Eclipse hemlock

COMBINED SAUNA

204.3 × 200.8 × 205.5 cm | Redlight™ infrared sauna combined with a Finnish sauna for 5-6 people

Canadian hemlock tree | 6-mm thick tinted safety glass door and sides

chromotherapy LED illumination | Bluetooth receiver (for playing music)

2 speakers | ventilation holes | heat and humidity meter | wooden pail with spoon

lava rock | sandglass | Heater for Finnish sauna: 8 kW/400 V

8 pcs RedLight™ infrared sauna heaters 2,8 kW/230 V (3 × 350W, 3 × 350W, 2 × 350W)

optional aroma oil in 4 different scents



Bluetooth receiver unit with USB to ensure that you can listen to your favorite songs while you relax!



Finnish sauna

BENEFICIAL EFFECTS

The high temperature in saunas and the resulting steam cause increased sweating by widening the pores of the skin. Various toxins and other deposits leave the body through the pores by sweating. Sauna users often feel refreshed and experience health improvements, which is not a coincidence. Your body carries out detoxification by sweating, while your muscles become relaxed, and your overall well-being improves greatly.

The hot vapour boosts blood circulation in every part of the body, including muscles and joints. As a result, oxygen supply improves, which is

essential for cell regeneration and formation of new cells. Many consider saunas to be a more effective weight-loss method than sports. It is a fact indeed that saunas have a positive effect on metabolism - it accelerates it and enhances its effectiveness, which might result in weight loss. Spending 15-20 minutes in a sauna is equal to a one-hour brisk walk or to a lighter training session! Regular sauna use can help you relieve tension. People with sleep difficulties (e.g. insomnia) are particularly fond of using saunas because it promotes deep and relaxing sleep.



Aroma oil for saunas

Scents: Eucalyptus, Lavender, Mediterranean, Orange blossom, Polynesia, Rosemary.

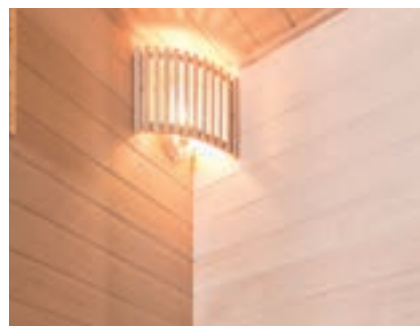




Igneus hemlock

FINNISH SAUNA

150 × 105 × 190 cm | Indoor Finnish sauna for 2 people
Canadian hemlock tree | 8-mm thick safety glass door and sides
fixed floor grid | removable stove protection grid | sandglass
heat-resistant luminary with wood panel | ventilation holes
heat and humidity meter | wooden pail with spoon | lava rock
furnace for Finnish sauna: 4,5 kW/220 V | optional aroma oil in 4 different scents



Finnish sauna stove





Serenis hemlock

FINNISH SAUNA

180 × 150 × 210 cm | Indoor Finnish sauna for 4 people
 Canadian hemlock tree | 8-mm thick safety glass door and sides
 fixed floor grid | removable stove protection grid | sandglass
 heat-resistant luminary with wood panel | ventilation holes
 heat and humidity meter | wooden pail with spoon | lava rock
 furnace for Finnish sauna: 8 kW/400 V | optional aroma oil in 4 different scents



Finnish sauna stove





Calidus hemlock

FINNISH SAUNA

200 × 170 × 210 cm | Indoor Finnish sauna for 5-6 people
Canadian hemlock tree | 8-mm thick safety glass door and sides
fixed floor grid | removable stove protection grid | sandglass
heat-resistant luminary with wood panel | ventilation holes
heat and humidity meter | wooden pail with spoon | lava rock
furnace for Finnish sauna: 9 kW/400 V | optional aroma oil in 4 different scents



Finnish sauna stove

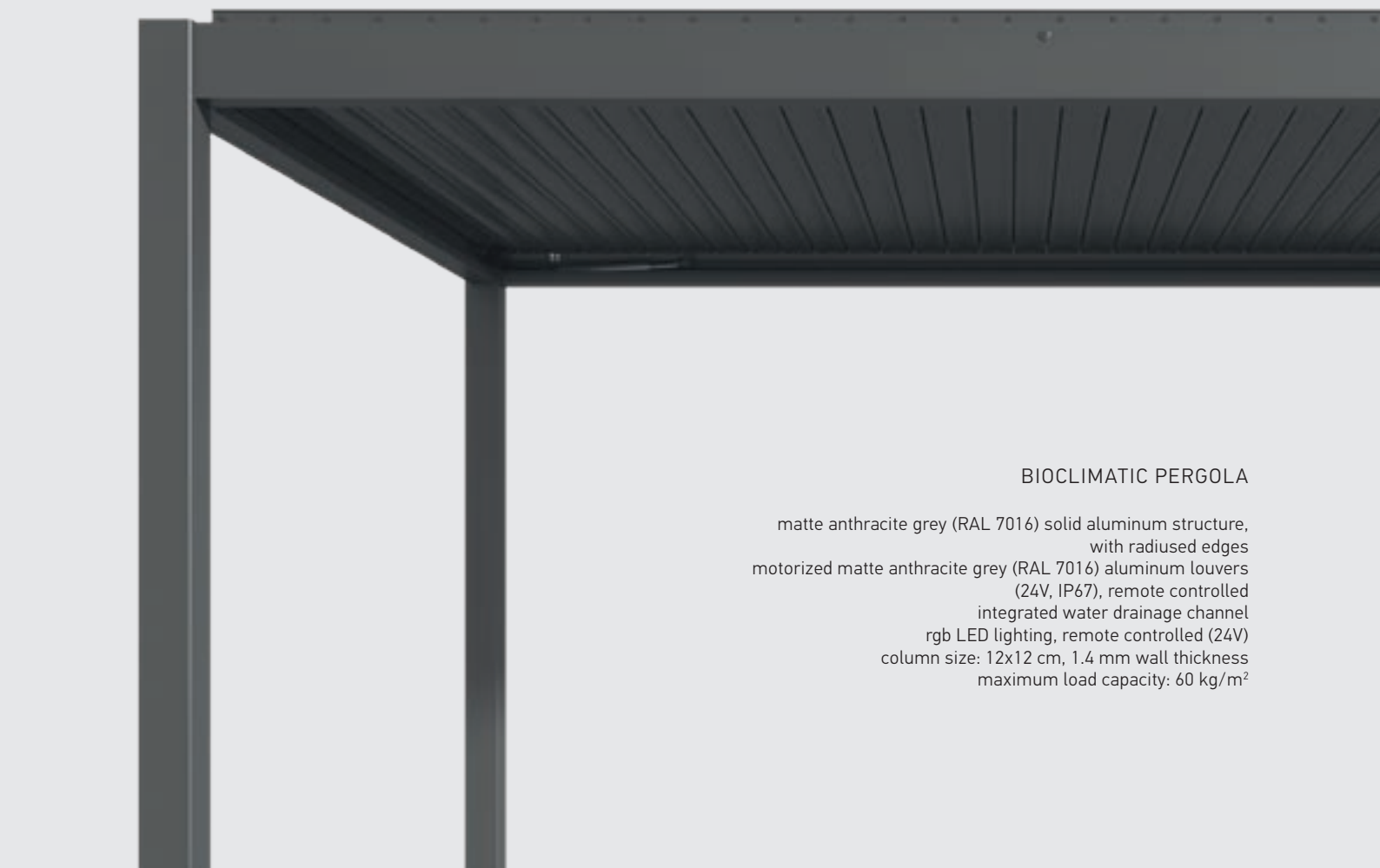




MotionFlex Bioclimatic Pergola

The elegantly and modernly designed MotionFlex louvered pergolas provide an exclusive appearance and excellent shading for your home's outdoor areas.





BIOCLIMATIC PERGOLA

matte anthracite grey (RAL 7016) solid aluminum structure,
with radiused edges
motorized matte anthracite grey (RAL 7016) aluminum louvers
(24V, IP67), remote controlled
integrated water drainage channel
rgb LED lighting, remote controlled (24V)
column size: 12x12 cm, 1.4 mm wall thickness
maximum load capacity: 60 kg/m²



WB00544

Louvered pergola with anthracite grey structure,
motorized control, rgb LED lighting

3000 x 3000 x 2500 mm



WB00545

Louvered pergola with anthracite grey structure,
motorized control, rgb LED lighting

4000 x 3000 x 2500 mm

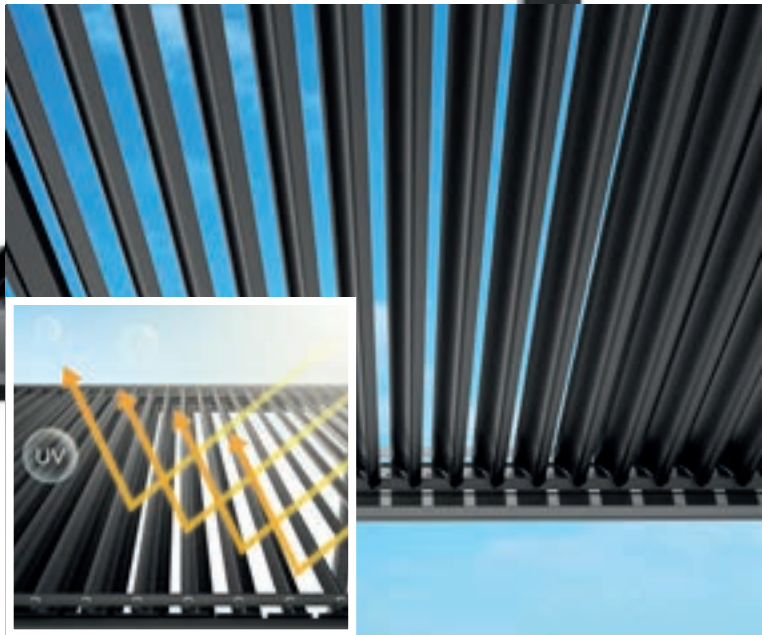
The motorized control placed on the roof structure allows for easy adjustment of the position of the aluminum louvers to reflect harsh sun rays, permit diffused sunlight, provide complete protection against rain and snow, or even ensure uninterrupted ventilation preventing the air beneath the pergola from warming. Thanks to the bioclimatic pergola, we can relish the outdoors in every season. Regardless of weather changes, we can enjoy the outdoor spaces while using the hot tub or even while relaxing on stylish garden furniture. The pergolas are equipped with rgb LED lighting, serving as evening mood lighting, thus ensuring a comfortable outdoor experience even during the evening hours.



Closed louvers

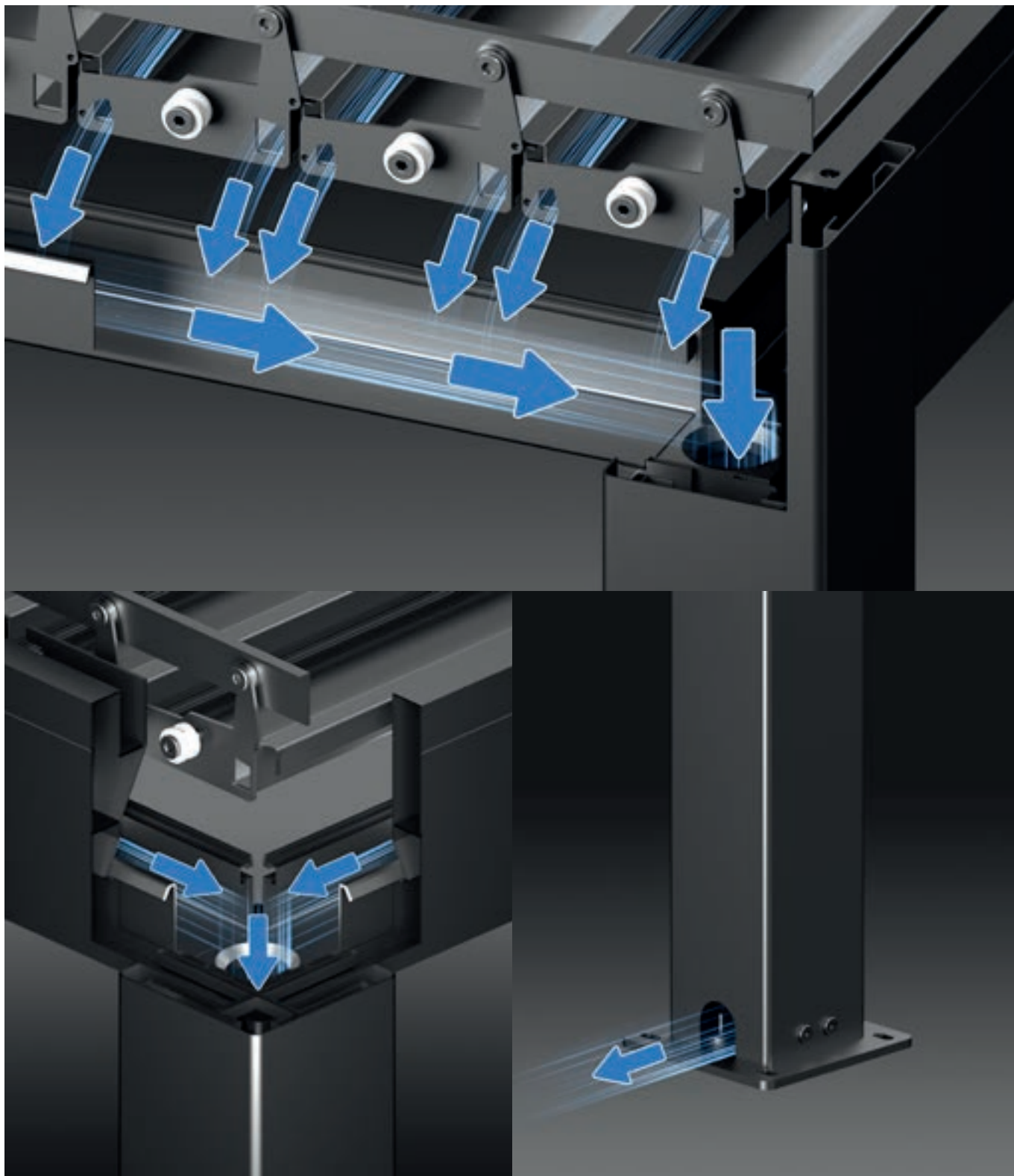


Semi-open louvers at 45°



Open louvers at 90°





HIDDEN WATER DRAINAGE CHANNEL SYSTEM



WB00534
Side shading for pergolas
3000 x 2500 mm



WB00535
Side shading for pergolas
4000 x 2500 mm

premium garden furniture



An essential part of complete relaxation is recharging, filled with experiences, in the relaxing environment of our home. Comfortable and eye-catching garden furniture is an indispensable element of any garden we dream of. The friendly environment and the comfortable balcony set will make your garden a pleasant and relaxing place!





Amor

The thick upholstery and cushions make our Amor lounge set one of our most comfortable models. The natural wood elements at the end parts of the lounge set serve as side tables to store our accessories and your delicious refreshing summer drinks. Our Amor set will also look splendid in your home!

*Frame: Aluminium Anthracite color | Cushion: Olefin Fabric |
For bottom frame: Textilene | Pillows: Olefin |
Table top and armrest: Teak*

Olefin: The olefin material is perfectly resistant to weathering and It has strong tensile strength in addition to its colourfastness. This material dries quickly and is also extremely comfortable, so in addition to durability also contributes perfectly to our quality relaxation time.

Textilene: The textilene fabric is extremely durable and provides an excellent solution for making outdoor furniture. Waterproof and water repellent material!



GARDEN SOFA SET – CORNER ELEMENT

790 × 790 × 650 mm



GARDEN SOFA SET – DOUBLE CORNER ELEMENT,
LEFT HAND

1760 × 790 × 650 mm



GARDEN SOFA SET – DOUBLE CORNER ELEMENT,
RIGHT HAND

1760 × 790 × 650 mm



GARDEN COFFEE TABLE

1200 × 800 × 255 mm

Aspero

Aspero is known for its unique design and majestic appearance. The woven seats, complete with comfort straps, convey purity, while the wavy style cushions magically transform the entire collection into a perfect combination of garden furniture. The modern lounge set will be a perfect element for your home, while it also provides sufficient space for a group of friends to enjoy fresh air outdoors, and conversations with each other!

*Frame: Aluminium Taupe color | Cushion: Olefin Fabric | Pillows: Olefin |
Table top and armrest: Teak | Double layers textilene
with quick dry foam inside*



ASPERO GARDEN FURNITURE SET

contents: 1 sofa, 1 table, 2 armchairs



3-SEATER GARDEN SOFA
2200 × 810 × 615 mm



The items can only be ordered as a set.



GARDEN ARMCHAIR
800 × 810 × 615 mm



GARDEN COFFEE TABLE
1200 × 700 × 375 mm



GARDEN TABLE FOR 8 PEOPLE

2200 × 900 × 750 mm



GARDEN TABLE FOR 6 PEOPLE

1600 × 900 × 750 mm



GARDEN CHAIR
700 × 560 × 800 mm



GARDEN TABLE FOR 10 PEOPLE,
EXTENDABLE

2800(3400) × 1000 × 770 mm



SUN LOUNGER

2000 × 805 × 880 mm



Chill

Chill for soothing relaxation! The eye-catching rope-woven design and the black aluminum frame structure of our sun lounge will add trendy and practical features, as well as their combination, to your home! All you need to do is to hop in our Chill sun lounge and forget about all the troubles of the day!

*Black Aluminium frame | Outdoor Rope weaving |
Include seat cushion*

SUN LOUNGER

2000 × 700 × 350 mm



Meridien

Choose Meridien if you prefer a more adventurous and unique appearance! The robust and exclusive frame structure is soothed with soft cushions, while the beige shade is a perfect match for even the most distinctive or pure garden elements and decorations. Meridien for perfect social gatherings!

*Frame: Aluminium Anthracite color | Cushion: Olefin Fabric |
Pillows: Olefin | Table top and armrest: Teak*







GARDEN CHAIR

560 × 690 × 800 mm



GARDEN TABLE FOR 6 PEOPLE

1600 × 900 × 750 mm



GARDEN TABLE FOR 8 PEOPLE

2200 × 900 × 750 mm

MERIDIEN GARDEN FURNITURE SET

contents: 1 sofa, 1 table, 2 armchairs, 5 decorative pillow



3-SEATER GARDEN SOFA

2065 × 770 × 760 mm



GARDEN COFFEE TABLE

1200 × 700 × 375 mm

GARDEN ARMCHAIR

770 × 770 × 760 mm



The items can only be ordered as a set.



SUN LOUNGER WITH CUSHIONS

2000 × 765 × 880 mm



SUN LOUNGER WITHOUT CUSHIONS

1810 × 735 × 970 mm

SERVING CART

865 × 535 × 880 mm



Messina

Messina, the compact garden set! The armrest decoration is designed with a rope coating, which makes the product not only stylish but also brings it closer to nature. The simplicity and modernity of the Messina collection will magically enchant every generation!



Frame: Aluminium Anthracite color | Rope | Table top: 12mm HPL

GARDEN CHAIR

615 × 640 × 780 mm



GARDEN TABLE FOR 6 PEOPLE

1800 × 1000 × 740 mm



GARDEN TABLE FOR 4 PEOPLE

895 × 895 × 730 mm

Paradise

Paradise? Paradise! Effortless recharging, unique design, captivating form and a cosy combination of colours! All of these in one product: Paradise! Comfortable garden sofa with an armchair and a table for those who love soft colours. It is a solid and enchanting garden set!

*Black Aluminium frame | Outdoor webbing weaving (6mm) |
Include seat & back cushion | Table with Natural Plastic wooden top*

PARADISE GARDEN FURNITURE SET

contents: 1 sofa, 2 armchairs, 2 table



GARDEN ARMCHAIR

750 × 750 × 750 mm

3-SEATER GARDEN SOFA

1950 × 750 × 750 mm

GARDEN COFFEE TABLE

700 × 700 × 350 mm



Ravenna



The design of the Ravenna collection was inspired by the word "Excellence" and aims to achieve the "Wow-effect". The classic black and white combination can be perfectly combined with the unique style of our home. The set encourages us to get into refreshing minutes of relaxation.

*Frame: Aluminium White color | Cushion: Olefin Fabric |
For bottom frame: Textilene | Pillows: Olefin |
Table top: Teak | Ice bucket: Stainless steel*





GARDEN SOFA SET - DOUBLE
CORNER ELEMENT, LEFT HAND

1480 × 840 × 610 mm



GARDEN SOFA SET - DOUBLE
CORNER ELEMENT, RIGHT HAND

1480 × 840 × 610 mm



GARDEN SOFA SET -
MIDDLE CORNER ELEMENT

840 × 840 × 610 mm



GARDEN SOFA SET -
MIDDLE SOFA ELEMENT

690 × 840 × 610 mm



SUN LOUNGER

2000 × 800 × 875 mm



GARDEN TABLE FOR 6 PEOPLE

1600 × 1000 × 770 mm



GARDEN COFFEE TABLE

1100 × 815 × 410 mm



GARDEN CHAIR

560 × 625 × 650 mm



GARDEN ARMCHAIR

890 × 840 × 610 mm



3-SEATER GARDEN SOFA

2270 × 840 × 610 mm



Sky

Looking at our Sky product, we will truly feel heavenly delight in our home. Sometimes it feels especially good to get away from the hustle and bustle, and enjoy the beautiful weather in the company of a glass of wine and a pleasant book. A gathering of family or friends? Our Sky product family will provide sufficient room for the whole company.

*Black Aluminium frame | Outdoor Rope weaving (6mm) |
Include seat cushion | Aluminum Table*

SKY DINING SET FOR 6 PERSON

contents: 6 chairs, 2 table



GARDEN TABLE FOR 6 PEOPLE

1500 × 800 × 720 mm

GARDEN CHAIR

600 × 600 × 800 mm



Supreme

Choose our Supreme product if you really want to feel the real luxury experience! Special black aluminum frame structure and outdoor woven technology for a unique look! The Supreme lounge set with unique outdoor cushions will easily lure you into some pleasant relaxation outdoors!

*Black Aluminum frame | Outdoor Rope weaving |
Include seat and back cushion | Aluminum Table*

SUPREME GARDEN FURNITURE SET

contents: 1 sofa, 2 armchairs, 1 table



GARDEN COFFEE TABLE

1200 × 700 × 350 mm

2-SEATER GARDEN SOFA

1350 × 750 × 700 mm

GARDEN ARMCHAIR

750 × 750 × 700 mm

SUPREME DINING SET FOR 4 PERSON

contents: 4 chairs, 1 table

GARDEN CHAIR
630 × 600 × 700 mm



GARDEN TABLE
900 × 720 mm

SUPREME DINING SET FOR 6 PERSON

contents: 6 chairs, 1 table

GARDEN CHAIR
630 × 600 × 700 mm



GARDEN TABLE
1800 × 1000 × 720 mm

Grill





Cherokee

Garden grills for the perfect and unforgettable garden party with family and friends. Choose the 3 or 4 gas burner version in an exclusive black or silver design, and add diversity to your garden with your own gas grill. Your relatives can't wait to be spoiled with delicious flavours!

High heat and weather-resistant stainless steel construction | High quality cast iron grill | Porcelain enamel-coated steel heat diffuser | Practical steel side shelves | 3kW main burner and 2.5kW side burner with a total rated power of 17.5 kW | Practical two-door cabinet for the gas tank and other accessories



SILVER TRIO GRILL WITH 3 GAS BURNERS

1170 × 555 × 1120 mm



BLACK QUINTET GRILL WITH 5 GAS BURNERS

1380 × 555 × 1120 mm



SILVER QUINTET GRILL WITH 5 GAS BURNERS

1380 × 555 × 1120 mm

Coyote

A hot summer evening and our safe home with our loved ones around us! What else could be missing from this idyllic picture?

With the Coyote kitchen compositions, you will be able to impress a larger company with a variety of delicious dishes! Order individual elements or the complete set, and create the super atmosphere of barbecue parties in your home!

*Coyote BBQ burner
4pcs 3,5kW gas burners /
Rotisserie kit /
1pc 3kW rear infrared
panel for warming rack /
2pcs lamps*

*Coyote gas burner
2pcs 3kW round burners /
stainless steel cover /
secure gas trunk storage /
2pcs drawers storage /
4pcs caster with brake
for easy movement /*

*Coyote pizza oven
Bottom cabinet with 2 doors /
60x54 cm oven made of
Cordierite stone /
4pcs caster with brake
for easy movement /
2+2 adjustable legs*

*Coyote outdoor fridge
Outdoor fridge
with 2 drawers /
stainless steel
construction /
temperature range:
0 – 8 C°*



6-PIECE GARDEN KITCHEN COMPOSITION (ELEMENTS CAN BE ORDERED SEPARATELY)*

7-PIECE GARDEN KITCHEN COMPOSITION (ELEMENTS CAN BE ORDERED SEPARATELY)*

* without accessories

BBQ CABINET (WITHOUT BBQ GRILL)

1219 × 660 × 962 mm



BBQ GRILL

770 × 591 × 504 mm



SINK CABINET

813 × 660 × 962 mm



GAS STOVE

813 × 660 × 962 mm



PIZZA OVEN

702 × 662 × 2069 mm



CORNER CABINET

777 × 777 × 962 mm



EQUIPMENT CABINET

892 × 660 × 962 mm



REFRIGERATOR WITH 2 DRAWERS

600 × 600 × 865 mm





The products included in the catalogue are for illustration purposes only, and may not always match the specifications of the advertised product.
Wellis reserves the right to modify the products – including the product range – without prior notice, since they are valid at the time they are delivered to the printing press.
We may not be made responsible for printing errors.

MAR1249

wellis.com